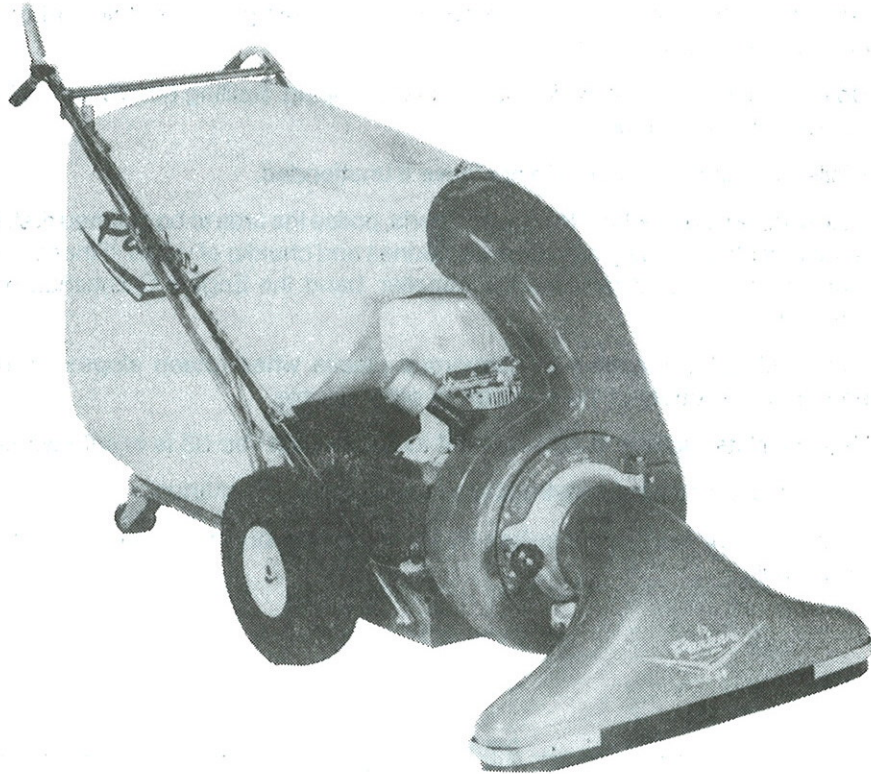


OWNER'S GUIDE



VACUUM SWEEPER VAC-35 GASOLINE AND LP ENGINE

MODEL NO. PV-9108-K-SP, 9108-K-SP-LP



**READ THESE INSTRUCTIONS
BEFORE SETTING UP AND OPERATING MACHINE**

**BE SAFE. PROTECT YOUR FAMILY, YOUR FRIENDS, YOURSELF.
OBSERVE ALL SAFETY INSTRUCTIONS.**

PARKER SWEEPER COMPANY

Box 1728

Springfield, Ohio 45501-1728

Plate No. 1535

90-72-A

TO THE OWNER

These instructions were written to assist you in the assembly and operation of your Vac-35. **READ THE INSTRUCTIONS** thoroughly **BEFORE** attempting to assemble and operate the machine so that you are familiar with the complete procedure and the safety precautions.

RULES FOR SAFE OPERATION



The following safety precautions are suggested to prevent damage to the equipment or injury to the operator or nearby persons.

1. Do not allow anyone to operate the Vac-35 without proper instructions.
2. Do not permit children to operate the Vac-35.
3. Do not sweep too close to fire. Ingesting hot ashes or cigarette butts will ignite the Bag.
4. Stop the Engine before reaching into the Intake Housing or Discharge Chute to dislodge sticks or other debris.
5. Stop the Engine before attempting to make any adjustment or performing any maintenance work on the Vac-35.
6. When working on the Engine, always remove the Spark Plug Wire from the Engine and attach it to the V shaped Clip on the Engine head.
7. Do not run the Engine in an enclosed area. Exhaust gases contain carbon monoxide, an odorless and deadly poison.
8. Do not fill the Fuel Tank while the Engine is running. Spilling gasoline on a hot Engine may cause a fire or an explosion.
9. While machine is running, do not leave it unattended.
10. Before using the machine to pick up debris, police the area to be cleaned first, picking up any large objects such as glass, toys, dog bones and chunks of wood. If these pass through the machine, they could damage the Impeller, bend the Engine Crankshaft or put a hole in the Bag.
11. Avoid using the machine in dangerous places where steep slopes or loose debris will endanger the safety of the operator or other people.
12. Keep all Nuts, Bolts and Screws tight to be sure the Vac-35 is in safe working condition.
13. Follow the maintenance instructions as outlined in this manual.
14. Do not start or run Engine unless Bag and Intake Housing are properly secured as injury may result.

IMPORTANT

ALWAYS GIVE THE FOLLOWING INFORMATION WHEN ORDERING REPAIR PARTS:

- | | |
|-------------------------------|------------------------|
| 1. Part Number (Not Ref. No.) | 3. Description of Part |
| 2. Quantity Needed | 4. Model No. of Vac-35 |

**If unable to obtain parts locally, write down above information and send to:
PARKER SWEEPER CO., BOX 1728, SPRINGFIELD, OHIO 45501**

Your unit is right hand (R.H.) or left hand (L.H.) as you stand behind it.

ASSEMBLY INSTRUCTIONS

YOUR SAFETY IS OUR CONCERN. READ ALL SAFETY RULES AND OPERATING INSTRUCTIONS BEFORE ATTEMPTING TO OPERATE THIS EQUIPMENT. FAILURE TO FOLLOW SAFETY RULES AND OPERATING INSTRUCTIONS MAY RESULT IN SERIOUS INJURY.

1. The Vac's covered in this owner's guide is shipped complete in one box. Follow all instructions on assembly very carefully.
2. Unpack all items from Carton.
3. Tip box over so Wheels are toward floor. Pull unit out of box and stand upright.
4. DO NOT discard the Carton or any of the inserts until the unit is completely assembled.
5. All hardware is on the unit in it's proper location. If something is missing, notify the dealer/distributor where unit was purchased. If unable to purchase parts locally, contact the Parker Sweeper Company.
6. Whenever the terms left or right hand, or "L" and "R" are used, it means from a position standing behind the unit facing forward.

NOTE: See AF-280 Handle Assembly on Plate 753 for reference to numbers used in the following instructions.

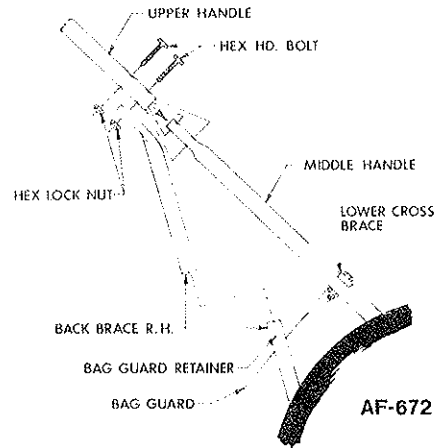
HANDLE ASSEMBLY

1. Remove Hex Hd. Bolts (7) and Hex Lock Nuts (49) from the bottoms of the right and left Upper Handles (5) and (54).
2. Place Upper Handles (5) and (54) over ends of Middle Handles (25).
3. Align the lower holes in both Upper and Middle Handles. Replace Hex Hd. Bolts (7), removed in step 1, to each of the lower holes.
4. Lift Handles to align lower Hex Hd. Bolts (7) with holes in Back Braces (9) and (49).
5. Place Hex Hd. Bolts (7) thru holes in Back Braces and attach Hex Lock Nuts (49). DO NOT TIGHTEN.
6. Align the upper holes in both Upper and Middle Handles removed in step 1. DO NOT TIGHTEN.

NOTE: If Bag Guard Retainer (57) is removed prematurely, simply move Right Back Brace (9) up, and Left Back Brace (46) down. Place Bag Guard Retainer (57) in side hole on Left Back Brace (46). Move Right Back Brace (9) down and attach free end of Retainer to side hole of Right Back Brace (9). Simultaneously lift both Back Braces, and Re-attach Hardware. (See steps 5 & 6.)

NOTE: Check alignment of Handle. The Hex Lock Nuts have been left loose to allow movement between the holes and the Bolts. Do not bend tubing to accomplish proper alignment.

7. Once Handles are aligned tighten all Hex Lock Nuts (49).
NOTE: Nuts should be tightened enough that at least two of the Bolt threads extend through the Nut. It may be necessary to collapse the tubing SLIGHTLY to accomplish this.



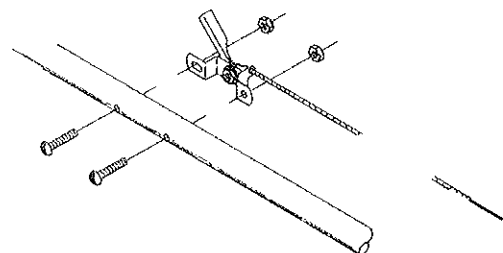
ASSEMBLING BAG PLATFORM

1. Place ends of Platform (27) onto End Caps (51) and align holes.
2. Place one Contour Hd. Bolt (6) through each hole and secure with Lockwashers (12) and Hex Nuts (13).
3. Lift back of Platform (27) and hold one Caster Assembly (33) against bottom, in either corner.
4. Round edge and holes of Caster Plate should align with outer edge and holes in corner of Platform.
5. Place Contour Hd. Bolt (6) through each hole and secure with Lockwashers (12) and Hex Nuts (13).
6. Repeat steps 3 thru 5 for other Caster.

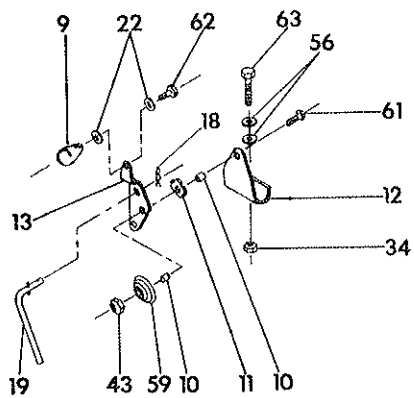
THROTTLE HOOK-UP

1. Remove Throttle Control Assembly from shipping position.
2. Straighten the Throttle Cable out and run it up the Left Hand Handles (5) and (25).
3. Align holes in Throttle Control (40) with those in Upper Left Handle.
4. Attach the Throttle Control (40) to the Upper Left Hand Handle (5) with the two Oval Hd. Screws (35) and Hex Nuts (41) furnished.
5. Attach Snap-On Clamps (56) to handles to secure Throttle Cable.

NOTE: Be sure not to place any bends in Throttle Control Cable less than 8 inches radius.



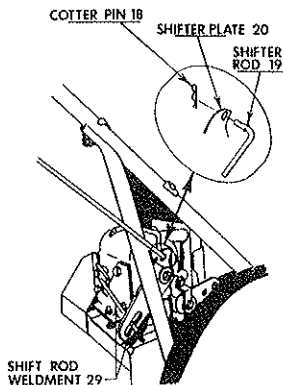
ASSEMBLY INSTRUCTIONS



AF-398

SHIFT LEVER CONNECTION

1. Remove cotter pin (18) from upper end of shifter rod (19).
2. Place end of rod thru upper hole in shift lever (13). Small pin in rod will act as a stop.
3. Replace cotter pin (18). Shifter rod (19) should pivot freely in shift lever (13).
4. Secure lower end of shifter rod (19) to shifter plate (20) as outlined above.



AF-725

5. Pulling shift lever fully to the rear is reverse gear. Moving lever progressively from reverse is neutral, 1st, 2nd, 3rd, 4th and 5th gears. Securing bracket (12) is slotted on bottom for adjustment if necessary.

NOTE: Unit will roll freely forward and backwards with the transmission in neutral.

CLUTCH ASSEMBLY AND ADJUSTMENT

1. Remove the snap clamp (56) securing the clutch cable (53) to the left middle handle (25).
2. Run the clutch cable (53) up the right hand upper handle (54) and assemble open loop of spring (55) through hole in tab of clutch grip (30).
3. Check to make sure the lower end of clutch cable is seated in the nylon pulley (78).

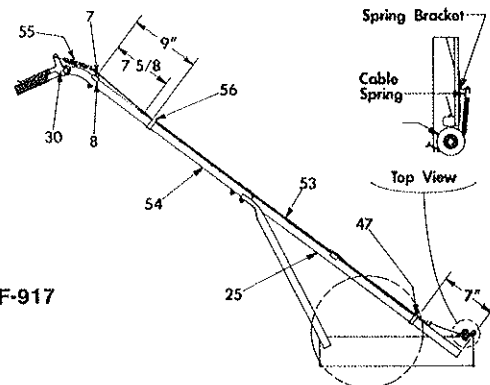
NOTE: Proper assembly of the clutch cable is important as it determines the adjustment of the clutch. Follow these instructions carefully to adjust clutch.

4. Loosen the fasteners on wire clamp (47) securing clutch cable (53) to the right middle handle (25).

5. Slide the black outer sheath of clutch cable (53) up or down so that the metal collar on top of sheath is 7 5/8 inches down from the center of the hex hd. bolt (7) securing upper cross brace (8) to handles.
6. Measure down 9 inches from that same bolt and assemble snap clamp (56), removed in step 1, to upper handle and clutch cable.
7. Measure up from the bottom of the middle handle (25) to the lowest edge of the wire clamp (47). This should be 7 inches.

NOTE: If adjustment is needed wire clamp (47) should be loosened enough to allow free movement over cable and handle without pulling or stretching black sheath.

8. Once clamp is properly set, hold in place and tighten fasteners.
9. This should be the correct setting and no further adjustment needed. To check, depress clutch grip (30), engaging clutch, the cable spring should be, almost or just touching nylon pulley (78).
10. If after inspection or operation the clutch would need adjustment, loosen the fasteners on the wire clamp (47). Moving the clamp upward on handle and cable will loosen the tension of clutch. Moving the clamp down will tighten clutch.



AF-917

TO ASSEMBLE SPIN-PAK®

1. Remove the hex hd. bolts, lock nuts, and flatwashers, from the three upper holes used to secure the retaining ring to the blower housing. DO NOT remove the bottom bolt or the retaining ring from blower housing.
2. Align the holes in the Spin-Pak® with the three upper holes in the retaining ring and blower housing. Replace hardware removed in Step 1 and tighten.

ATTACHING DUST BAG

1. Attach the dust bag to the sweeper by placing the loops over the handles.
2. Slip the neck of the dust bag over the Spin-Pak® until the tie strap can be pulled tight around the housing neck just over the bead on the Spin-Pak®. The bead must be covered.
3. Attach Bag Hooks to the front Bag Straps and hook over the lower cross brace. **IMPORTANT:** Failure to attach front Bag Straps to the lower crossbar will cause premature wear of bag around the bottom and around the neck at the Spin-Pak®. The Spin-Pak® may also break due to excessive weight from the Bag.

NOTE: FAILURE TO OBSERVE SAFETY INSTRUCTIONS MAY RESULT IN SERIOUS INJURY.

ASSEMBLY INSTRUCTIONS (Cont.)

ATTACHING INTAKE HOUSING

NOTE: See AF-587 Housing Assembly on Plate No. 755 to the back of this owner's guide for reference to numbers used in the following instructions.

1. Insert Hinge Bosses, on Collar of Intake Housing (14) behind the Hinge Extensions on Front Cover Assembly (8).
2. Swing Intake Housing (14) to lay flat against Front Cover Assembly (8).
3. Secure by placing Flatwasher (10) and Adjusting Knob (9), on Pivot Bolt, over the Collar of Intake Housing (14) and tighten Adjusting Knob (9).

L.P. FUEL TANK HOOK-UP

WARNING: Proper assembly of replacement parts is the responsibility of the owner or mechanic doing the work. Parker Sweeper Company will not recommend or supply replacement parts for liquid propane units. Parts listed on repair parts list are for reference only. As technology continues to change, the manufacturer should be consulted for recommendation of repair parts and instructions for their assembly.

NOTE: Only authorized L.P. mechanics familiar with current parts. Failure to comply with this requirement could result in serious damage, fire, explosion or asphyxiation. This applies to the following instructions.

NOTE: Numbers in parenthesis refer to those used in AF-277 "L.P. GAS GROUP" on Plate No. 874 to the back of this owner's guide.

1. The Liquid Propane Vac-35 requires a 20-pound Vapor Withdrawal Fuel Tank. This tank can be purchased separately from Parker Sweeper Co. as part no. 65-747-B (Item (9) must be ordered when tank is ordered). If purchased from a local L.P. Fuel Supplier, they will need to install the Street Elbow which always remains with the Tank.

NOTE: The Tank Fuel Outlet must be parallel thru the valve, with the tank center line thru the pin and the gage center.

2. Place tank in Tank Bracket Weldment (11) making sure vertical pin is through hole in Tank Collar. This places the relief valve so that any fuel discharged is directed UPWARD. As required by government regulations for the L.P. fuel tanks.
3. Secure Tank with Strap Weldment (12).
4. Remove Male Half (16) from quick disconnect coupling and thread onto Street Elbow (9).
5. Attach Hose (14) to Tank by threading Female Half (15) of quick disconnect coupling to Male Half (16).
6. See Operating Instructions for procedure to be used in starting Engine with L.P. fuel.

TANK SPECIFICATION

1. Storage and Handling Liquified Petroleum Gases-1979 NFPA Specifications.
2. Horizontally Mounted Vapor Withdrawal.
3. 12 1/4 O.D., 19 overall length, 13 5/8 cyl. length 20 lbs., .77 cu. ft. automatic excess flow valve.
4. Manchester Tank & Equipment Company
29389 Lexington Park Drive
Elkhart, Indiana 46514
Parker Sweeper Company
Part No. 65-747-B

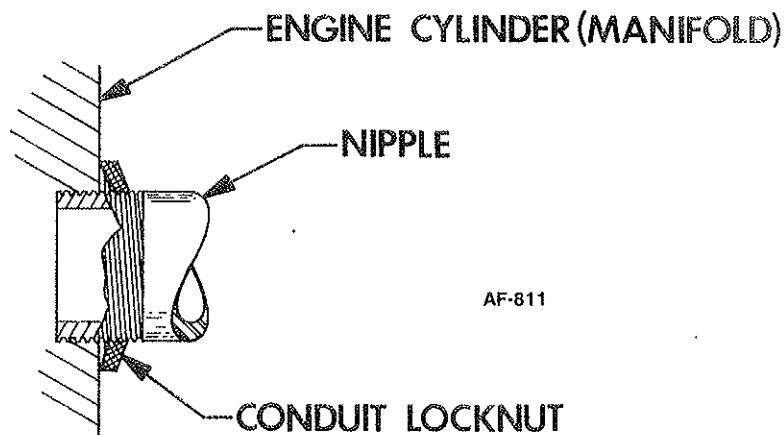
NOTE: Auto excess flow valve must be attached to the tank so the threaded end is parallel with the center line thru the float gage.

MUFFLER ASSEMBLY

NOTE: For L.P. Units only. See AF-257 on Plate No. 754 for reference to numbers used in the following instructions.

1. Remove Muffler (25) and Pipe Nipple (2) from shipping position.
2. Attach items to threaded Casting Manifold on Engine (4).
3. Adjust Conduit Locknut (24) to desired position on Pipe Nipple (2) and tighten securely.

NOTE: Conduit Locknut must be installed as shown below, to avoid Premature Failure. If loosened, it may cause damage to Cylinder Threads.



WARNING

Make a thorough inspection to see that all fastenings are tight and all parts are properly installed. DO NOT start engine without Intake Housing and Dust Bag in place.

IMPORTANT

WARNING: The Engine contains NO OIL. Read the Engine Instruction Manual carefully before operating the Vac-35. Be sure you know how to start and stop the Engine before proceeding further. Do not start the Engine until all assembly is finished.

OBSERVE SAFETY RULES AT ALL TIMES. DON'T TAKE CHANCES!

OPERATING INSTRUCTIONS

SELF PROPELLED LIQUID PROPANE UNIT

NOTE: FAILURE TO OBSERVE SAFETY INSTRUCTIONS MAY RESULT IN SERIOUS INJURY.

LIQUID PROPANE FUEL

CAUTION: When installing Fuel Tanks, new or refills, be sure they comply with the following specifications:

1. Storage and Handling Liquefied Petroleum Gases-1979 NFPA Specifications.
2. Horizontally Mounted Vapor Withdrawal.
3. 12 1/4 O.D., 19 overall length, 13 5/8 cyl. length 20 lbs., .77 cu. ft. automatic excess flow valve.

These specifications are also printed on the fuel tank support.

IMPORTANT: Check your local, state and federal regulations for using liquid propane fuel to be sure you comply with all requirements.

TO START LIQUID PROPANE UNIT:

IMPORTANT: Read the Engine Manual CAREFULLY before operating the Vac-35.

Before starting the Engine read and understand the following:

1. Be sure the Engine crankcase is filled with the proper type and amount of oil.
2. Spin-Pak® is in place.
3. Dust Bag or Discharge Hose is in place.
4. Intake Housing or Hose Kit is attached to the Fan Housing.
5. Transmission MUST be in NEUTRAL to start.
6. Release the BRAKE by twisting lever and letting it slide down.
7. Open Fuel Line valve at Tank.
8. Set Throttle in closed position.
9. Pull Starter Rewind Cable 3 or 4 times. This will open automatic shut-off valve allowing fuel to enter the Regulator. Engine may start at this time. If not, open Throttle 1/4 and momentarily press the Primer Button on the Regulator. Pull the Starter Rewind Cable with one hand and intermittently press the Primer Button as the Starter Cable is pulled thru. Open throttle to full position after Engine starts.
10. If Engine fails to start, repeat steps 8 & 9.
11. Turn in main fuel jet until it is closed. Back out 1 1/4 turns. This should be the position to allow the Engine to start. After Engine has been warmed up, adjust main jet for final running position by turning slowly in either direction until the Engine performance is satisfactory.
CAUTION: When stopping Engine, shut off fuel at tank and run Engine until it stops. This removes pressure from the valves and regulators and lengthens their life. Also, this reduces danger from fuel leakage while Engine is not used. This procedure is mandatory under National Fire Protection Assoc. Document 58, "Storage and Handling Liquid Petroleum Gases, 1979."
12. TO STOP UNIT, PLACE GEAR SHIFT LEVER IN NEUTRAL.
13. Pull up and twist Brake Lever 1/4 turn to lock in Brake position. This Brake is to be used as only a parking Brake.

14. Extra filled Tanks should be stored on steel rack with Tank horizontal and arrow and relief valve up.

TRANSMISSION OPERATION

NOTE: Transmission has five forward speeds.

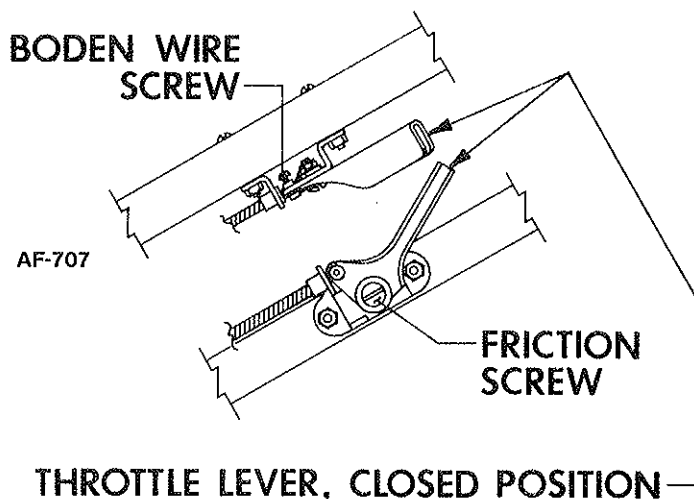
1. Transmission used on this equipment is a tractor type (not automotive). The operator does not have to start in first gear and shift on up to gear required, he can go directly into the gear needed. It is also important to understand that the gears are designed to go into mesh (into gear) only when not turning. De-clutching (releasing clutch handle) is required at all times when gear selection occurs. Never shift on hills or inclined surfaces.
2. The operator should not shift with the unit under heavy load. In no case should an operator shift from first to neutral, from reverse to neutral, or from neutral to first or reverse, without de-clutching.

CLUTCH OPERATION

1. The unit is equipped with a "Dead Man" clutch. When the transmission is put in gear, and the clutch is depressed and held in the down position the unit will move. The unit will stop moving when the clutch is released.

THROTTLE OPERATION AND ADJUSTMENT

1. The Throttle Control on Handle is a remote for the Throttle Control on Engine. Pull the throttle lever back, toward operator, to open Throttle for starting or speed control.
2. To stop unit, move Throttle Lever to the closed position and shut off fuel at Tank and run Engine until it stops.
3. While operating, if Throttle Lever does not stay open due to vibration of unit, tighten Friction Screw until there is sufficient friction to hold Throttle open.



**BE SAFE.
PROTECT YOUR FAMILY,
YOUR FRIEND, YOURSELF.
OBSERVE ALL SAFETY INSTRUCTIONS.**

OPERATING INSTRUCTIONS (Cont.)

SELF PROPELLED UNIT

TO START UNIT

IMPORTANT: Read the Engine manual CAREFULLY before operating the Vac-35.

Before starting the engine read and understand the following:

1. Be sure the Engine crankcase is filled with the proper type and amount of oil.
2. Spin-Pak® is in place.
3. Dust Bag or Discharge Hose is in place.
4. Intake Housing or Hose Kit is attached to the Fan Housing.
5. Transmission MUST be in NEUTRAL to start.

7. Pull Starter Rewind Cable 3 or 4 times. If Engine fails to start, repeat steps 5 & 6.
8. After Engine has started, release the BRAKE

WARNING: When refueling care should be taken not to spill fuel on hot Engine. This could cause the fuel to ignite, resulting in serious injury to operator or damage to the unit.

9. TO STOP UNIT, PLACE GEAR SHIFT LEVER IN NEUTRAL, and move SAFETY STOP switch to OFF position. Pull up and twist Brake lever 1/4 turn to lock in Brake position. This Brake is to be used as only a parking Brake.

TRANSMISSION OPERATION

NOTE: Transmission has five forward speeds.

1. Transmission used on this equipment is a tractor type (not automotive). The operator does not have to start in first gear and shift on up to gear required, he can go directly into the gear needed. It is also important to understand that the gears are designed to go into mesh (into gear) only when not turning. De-clutching (releasing clutch handle) is required at all times when gear selection occurs: Never shift on hills or inclined surfaces.
2. The operator should not shift with the unit under heavy load. In no case should an operator shift from first to neutral, from reverse to neutral, or from neutral to first or reverse, without de-clutching.

OPERATING NOTES

1. The efficiency of this unit depends on the breathing capacity of the Dust Bag. Under extremely dusty conditions the bag should be emptied and cleaned frequently. Always empty and clean bag before storing after use. Debris allowed to remain in the bag may cause spontaneous combustion, resulting in an explosion or fire.
2. Heavy concentrations of sand and gravel should be avoided. These materials are extremely abrasive, and while the Vac-35 will handle moderate amounts of these materials, it was not designed for heavy applications. Treat the Vac-35 with reasonable care and it will provide long, trouble-free service.
3. The Vac-35 will handle most common kinds of debris found around industrial plants, commercial buildings, homes, and farms. Acid contaminated materials, magnesium, dust and other DANGEROUS DEBRIS should not be handled with the Vac-35 unless approved by a regulating authority expert in the handling of such hazardous materials.
4. When using Hose attachment, keep it away from Engine exhaust system and other parts of the Engine that may be hot enough to burn Plastic Hose.
5. The Vac-35 is equipped with a Front Adjustable Caster which provide any height adjustment of Intake Housing that is practical. Nuts must be kept tight.

IMPORTANT

If Engine is started with Intake attached, serious injury may result by drawing clothing or parts of the body into the Fan.

If Engine is run without Dust Bag, small stones or other objects may be picked up and propelled at operator or bystanders through the unprotected opening causing serious injury.

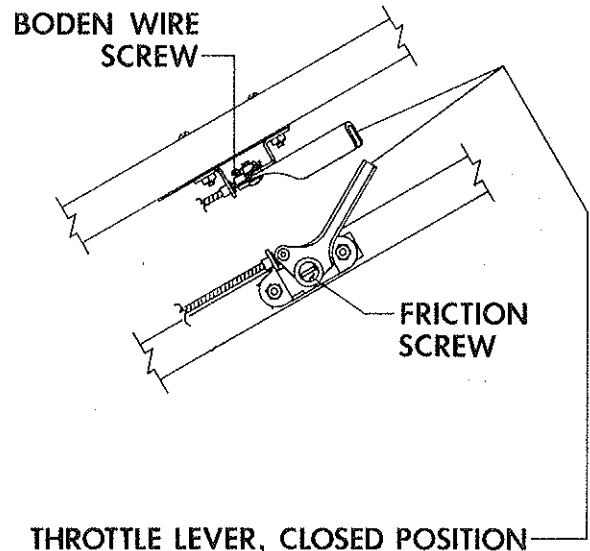
DANGER: Improper use of this equipment may result in serious injury.

CLUTCH OPERATION

1. The unit is equipped with a "Dead Man" clutch. When the transmission is put in gear, and the clutch is depressed and held in the down position the unit will move. The unit will stop moving when the clutch is released.

THROTTLE OPERATION AND ADJUSTMENT

1. The Throttle Control on Handle is a remote for the Throttle Control on Engine. Pull the Throttle Lever back, toward operator, to open Throttle for starting or speed control. Move Throttle Lever forward to the closed position for lowest idle.
2. To stop unit, move Throttle Lever to the closed position
3. If Engine is not stopping easily or seems to idle too high; Stop Engine and let cool if hot. Move Throttle lever to closed position and loosen Boden Wire Screw. Move Throttle Lever on Engine to full closed and retighten Boden Wire Screw.
4. While operating, if Throttle Lever does not stay open due to vibration of unit, tighten Friction Screw until there is sufficient friction to hold Throttle open.



MAINTENANCE INSTRUCTIONS

LUBRICATION

1. Lubricate the Wheel Bearings and Wheel Axle on the Caster once a week if used daily.

NOTE: Refer to Engine operating instructions for proper lubrication of the Engine.

2. Add a few drops of oil to the Throttle Control Cable and Wire to keep it operating smoothly.
3. Grease fittings are located in the Hubs of the Rear Wheels. Fresh grease should be added periodically to assure proper lubrication of Wheels.

NOTE: Check all items once a week if unit is used daily.

NOTE: Refer to Engine operating instructions for proper lubrication of the Engine.

DUST BAG CARE

1. Keep the Dust Bag clean at all times.
2. To clean the Dust Bag, turn the bag inside out and reattach to the sweeper.
3. Start the Engine and run at full Throttle. Lightly tap the Bag to release the dust trapped in the weave.
4. When the Bag is clean, remove it and turn it right side out again. Reattach to the Sweeper and resume sweeping.
5. DO NOT wash the Dust Bag to clean.

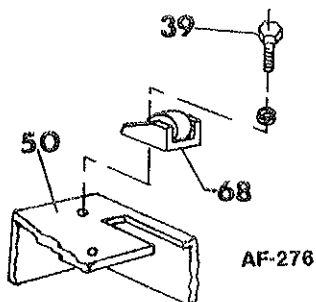
CHAIN TENSIONER ADJUSTMENT

NOTE: See AF-274 Chassis Assembly on Plate No. 751 to the back of this owner's guide for reference to numbers used in the following instructions.

1. The Chain Tensioner is adjusted properly at factory before shipment. Chain should be checked periodically for Chain tension and wear on Chain Tensioner. If Chain Tensioner should need replaced or Chain tension adjusted, follow these instructions.

NOTE: Round Wooden "Roller" is not designed to "roll." It must be clamped tightly with Bolt through Casting. Chain Side Bars will cut guide grooves in Roller and Chain Rollers will roll against Wood, assuring proper Chain adjustment and guidance without damage to Chain.

2. Remove Chain Cover (15).
3. Loosen Hex Hd. Bolt (39).
4. Slide the Tensioner (63) forward (toward Chain) until Tensioner will not slide further.



5. Pull Tensioner back 1/8" and retighten Hex Head Bolt (39).
6. Check Chain by pushing down and lifting Chain between Tensioner and Differential Sprocket.
7. Chain should move approximately 1/8" when checked. If Chain is loose it will jump off Sprocket. If too tight, Chain may break or cause excessive wear on Bearings.

BELT ADJUSTMENT

Best adjustments is automatically controlled by an Extension Spring on the end of the Clutch Cable. With this system, Belt tension is always correct, reducing Belt wear and Belt stretch.

BELT REPLACEMENT

1. Remove the Spark Plug to insure that Engine cannot be started accidentally.
2. Belt can be replaced by removing the Blower Housing and Fan.

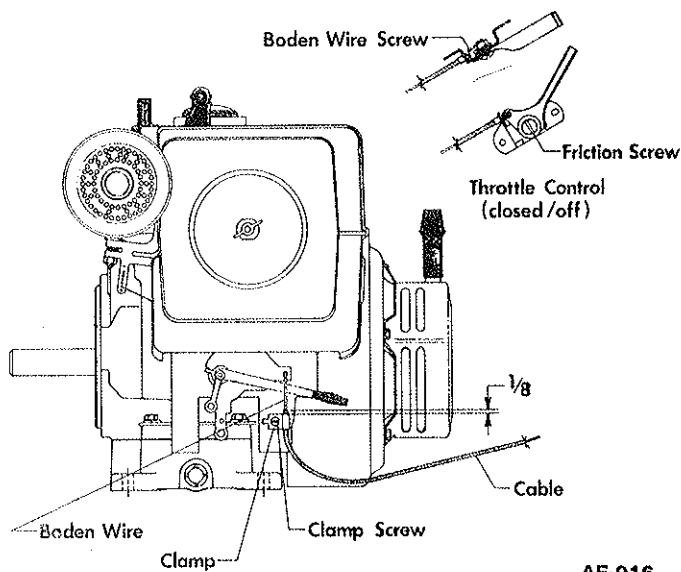
Remove the following items to reach Belt:

1. Dust Bag
2. Intake Housing
3. Front Cover
4. Fan
5. Spin-Pak®
6. Fan Housing
7. Guard

THROTTLE CONTROL CONNECTION

If it becomes necessary to remove or adjust Throttle Control Cable from Engine, follow set of instructions below.

1. Place Boden Wire thru Clamp and attach to Throttle Plate as shown in illustration AF-916.
2. Extend 1/8" of Cable beyond Throttle Lever Clamp and tighten Clamp Screw.
3. With Throttle Plate in the closed position on the Engine, Throttle Control on Handle should also be in the closed position.



NOTE: Make sure Stop Switch Wire is connected to Condenser Screw.

NOTE: If Throttle does not stay open due to vibration of unit, tighten Friction Screw on Throttle Control until there is sufficient friction to hold Throttle open.

READ SAFETY & OPERATING INSTRUCTIONS BEFORE OPERATING EQUIPMENT.

OPTIONAL ACCESSORIES

NOTE: Accessory Number and Price List can be obtained from a local distributor.

24" INTAKE HOUSING: For sweeping in narrow aisles or in areas where heavier objects are to be collected.

36" INTAKE HOUSING: Ideal for sweeping lighter weight debris and in larger, open areas.

HOSE ATTACHMENT 8" DIA.: 15 ft. length overall, fits all Vac-35 models. Attaches to Blower Housing for cleaning debris from hard-to-reach areas.

HOSE ATTACHMENT 6" DIA.: 15 ft. length overall, fits all Vac-35 models. Attaches to Blower Housing for cleaning debris from hard-to-reach areas.

HOSE ATTACHMENT 4" DIA.: 15 ft. length overall, fits all Vac-35 models. Attaches to Blower Housing for cleaning debris from hard-to-reach areas.

SCRAPER BRUSHKIT: Installs inside rear of Intake Housing. Loosens debris which adheres to surface. (Available for 30" Intake Housing only.)

DUAL CASTER ASSEMBLY: Wheel Kit with quick individual wheel adjustment. Makes for easy operation over uneven surfaces.

MAGNETIC ROD KIT: Assembles to front of Intake Housing. Attracts metal objects. (Available for 30" Intake Housings only.)

LUMITE® BAG: 10 cu. ft. capacity, polypropylene material. Won't fade, shrink, mildew or rot. Use when gathering damp or wet material.



WARRANTY INFORMATION

Parker Sweeper Company warrants each new piece of equipment manufactured under its name except engines, transmissions, differentials and regulators where applicable to be free from defects in materials and workmanship under normal use and service. Parker Sweeper Company's obligation is limited to repair or replacement, at its option for one (1) year (ninety (90) days for commercial service) from date of purchase.

If trouble should occur with the engine, please contact the manufacturer, giving them all information: Name of unit, purchased from company, (PV-8308-K-SP, PV-8308-K-SP-LP Parker Sweeper Co., etc.); problem with engine, model number of engine, etc.; when unit was purchased; and a complete return address with zip code. Failure to provide complete information will result in unnecessary delay of repair and return of unit. The following is a list of companies that supply Parker Sweeper Co. with various products. Please contact the companies directly at the address listed if any problems should occur.

All parts listed are under the manufacturer's name and part number. Replacement parts should be purchased directly from each company listed with a complete description of the part and part number. Addresses of manufacturers who stock parts are listed below.

Parts listed under the standard Parts can be purchased from most hardware stores.

Proper assembly of replacement parts is the responsibility of the owner or mechanic doing the work. Parker Sweeper Company warranty only applies to the original

purchased unit and/or replacement parts if assembled correctly by a qualified mechanic. Under no circumstances does the warranty extend beyond the original time specified from date of purchase.

ENGINES

Kohler Co.
Kohler, Wisconsin 27249

TRANSMISSION & DIFFERENTIAL

Peerless Gear & Machine Division
P.O. Box 620
Clinton, Michigan 49236-0620

L.P. PARTS:

Garretson Equipment Co.
P.O. Box 111
Mt. Pleasant, Iowa 52641
Gates Rubber Co.
990 South Broadway, P.O. Box 5887
Denver, Colorado 80217
Reliable Industrial Supply Co.
4606 Webster Street
Dayton, Ohio 45414
Impco Division
16916 Gridley Place
Cerritos, California 90701
Regos Dist.
5870 N. Rogers Avenue
Chicago, Illinois

HOW TO ORDER REPAIR PARTS

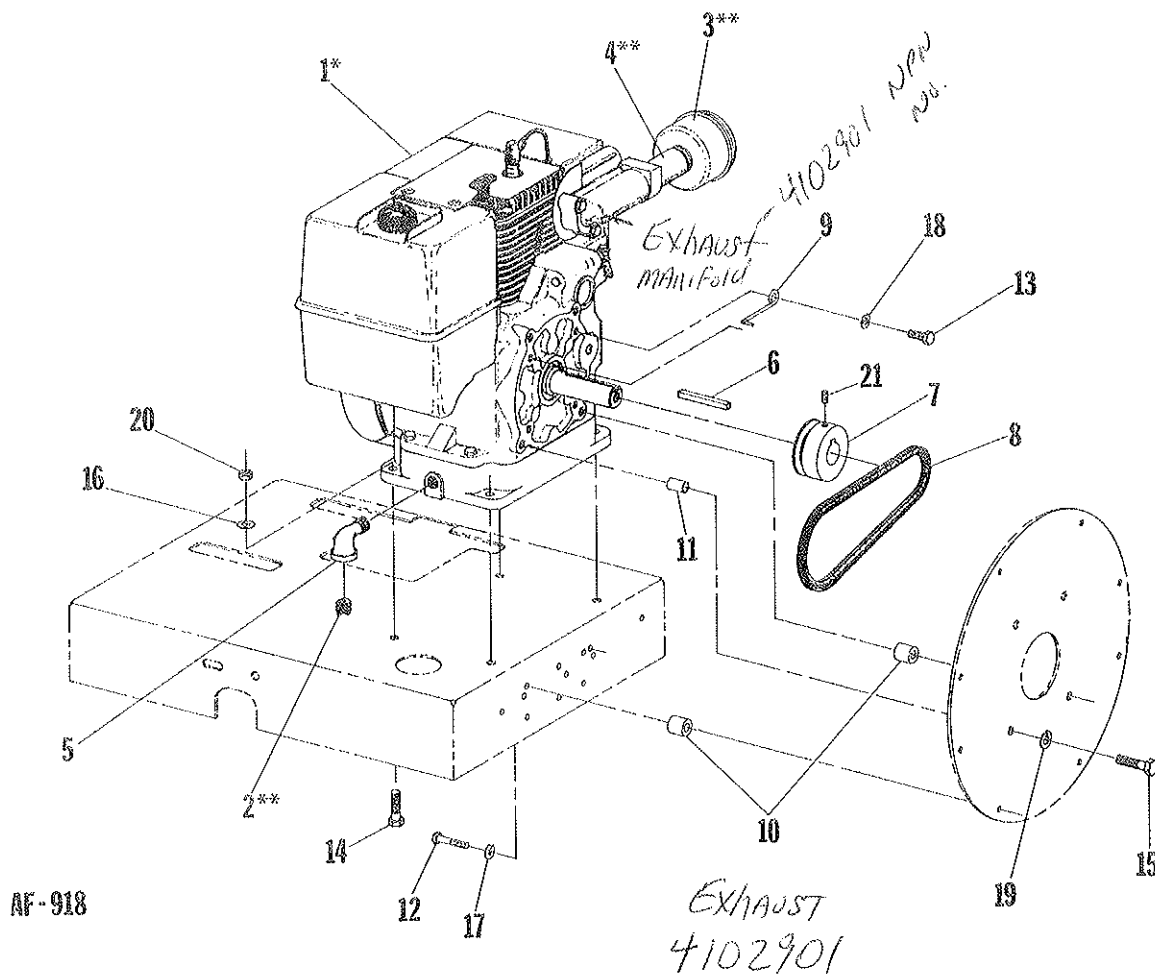
NOTE: When ordering service parts for any model VAC, follow the instructions listed below. By so doing, you will be assured of receiving the correct part in the shortest possible time.

1. Give the model and serial number found on the back of fan housing or back of chassis on the unit.
2. Write the complete part number as well as the description of the part, and quantity of part required.

3. Give detailed shipping instructions, that is: whether shipment is to be parcel post, United Parcel Service, air express, freight or truck.

NOTE: Parker Sweeper Co. is continually striving to improve its products. We must, therefore, reserve the right to make improvements or changes, when it becomes practical and possible to do so, without incurring any obligation to make changes or additions to the equipment previously sold.

ENGINE ASSEMBLY



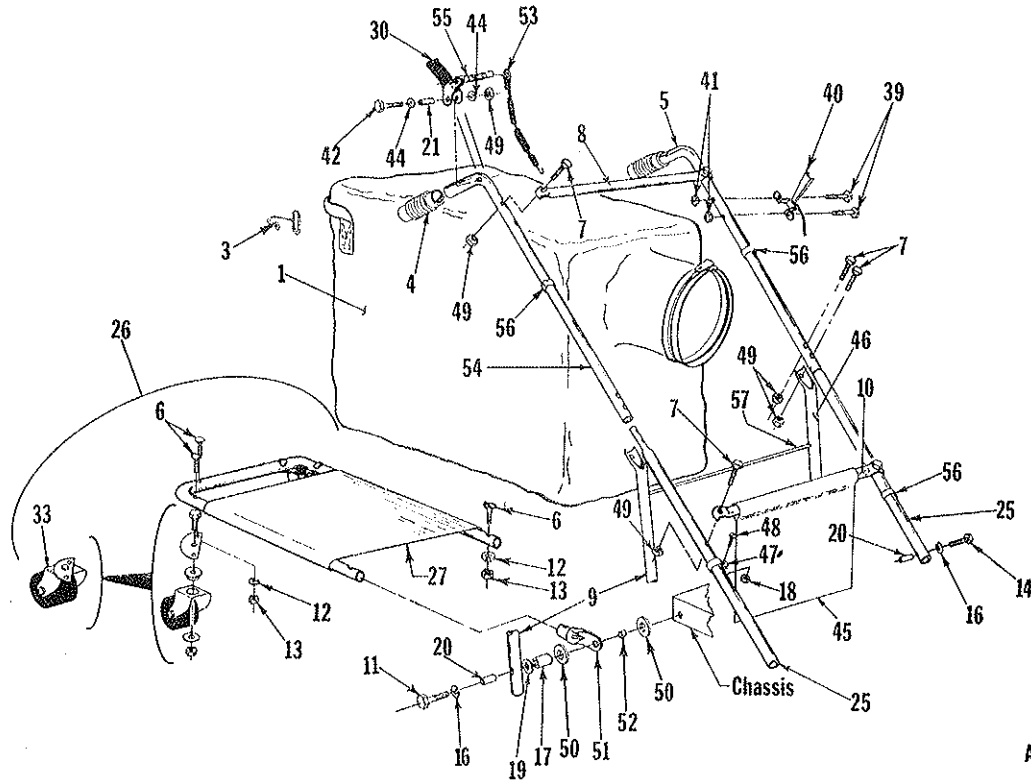
PARTS LIST

| Ref. No. | Part No. | Description | Qty. Per Unit | | Ref. No. | Part No. | Description | Qty. Per Unit | |
|----------|----------|------------------------------|---------------|-------|----------|-----------------------------------|-------------|---------------|-------|
| | | | SP | SP-LP | | | | SP | SP-LP |
| 1 | * | Engine, Kohler 8 H.P. | 1 | 1 | 14 | Bolt, Hex Hd. | 4 | 4 | |
| 2 | ** | Plug, Oil Drain | 1 | 1 | 15 | 3/8-16 x 1 1/4 | 4 | 4 | |
| 3 | ** | Muffler | 1 | 1 | 16 | Bolt, Hex Hd. | 4 | 4 | |
| 4 | ** | Pipe Nipple 1x4 | 1 | 1 | 17 | 3/8-16 x 1 1/2 | 4 | 4 | |
| 5 | 57-81-A | Street Elbow 1/2-90° | 1 | 1 | 18 | Flatwasher, Plain 3/8 | 4 | 4 | |
| 6 | 74-112-A | Fan Key 1/4 x 2 1/21 | 1 | 1 | 19 | Lockwasher, Spring 1/4 | 2 | 2 | |
| 7 | 81-61-A | Engine, Pulley | 1 | 1 | 20 | Lockwasher, Spring 5/16 | 2 | 2 | |
| 8 | 90-118-A | V-Belt (Gates #1260) | 1 | 1 | 21 | Lockwasher, Spring 3/8 | 4 | 4 | |
| 9 | 81-33-A | Belt Popper | 2 | 2 | 20 | Nut, Hex Lock 3/8-16 | 4 | 4 | |
| 10 | 79-139-A | Spacer | 5 | 5 | 21 | Screw, Allen Hd. Set 1/4-20 x 1/2 | 1 | 1 | |
| 11 | 90-122-A | Spacer | 1 | 1 | | | | | |
| 12 | | Bolt, Hex Hd. 1/4-20 x 1 3/4 | 2 | 2 | | | | | |
| 13 | | Bolt, Hex Hd. 5/16-18 x 3/4 | 2 | 2 | | | | | |

Items listed below should be purchased through a local Hardware, Lumber or Auto supply store. Grade 5 is recommended.

* Kohler Model No. M 8T, Spec. 301551
** Supplied with engine, Muffler spec. 230410, Nipple spec. 48 136 01

HANDLE ASSEMBLY



AF-280

PARTS LIST

| Ref. No. | Part No. | Description | Qty. Per Unit | | Items listed below should be purchased at a local hardware store, and must be of grade 5 quality. | Ref. No. | Part No. | Description | Qty. Per Unit | |
|----------|------------|--|---------------|-------|---|-----------|--|-------------|---------------|-------|
| | | | SP | SP-LP | | | | | SP | SP-LP |
| 1 | MA-419 | Dust Bag Assembly | 1 | 1 | | | | | | |
| *3 | 63-304-A | Bag Hook | 2 | 2 | | | | | | |
| 4 | 80-232-A | Handle Grip | 2 | 2 | 6 | 69-416-24 | Bolt, Contour Hd. 1/4-20 x 1 1/2 | 6 | 6 | |
| 5 | 83-18-C | Handle, Upper L.H. | 1 | 1 | | | | | | |
| 8 | 81-04-B | Cross Brace, Upper | 1 | 1 | 7 | 65-416-24 | Bolt, Hex Hd. 1/4-20 x 1 1/2 | 8 | 8 | |
| 9 | 85-09-RC | Back Brace R.H. | 1 | 1 | | | | | | |
| 10 | 81-47-B | Cross Brace, Lower | 1 | 1 | 11 | 65-516-40 | Bolt, Hex Hd. 5/16-18 x 2 1/2 | 2 | 2 | |
| 17 | 81-42-A | Spacer | 2 | 2 | | | | | | |
| 20 | 80-238-A | Inserts | 4 | 4 | 12 | 935-416 | Lockwasher, Spring 1/4 | 6 | 6 | |
| 21 | 80-225-A | Spacer | 1 | 1 | | | | | | |
| 25 | 82-242-B | Middle Handle | 2 | 2 | 13 | 335-416 | Nut, Plain Hex 1/4-20 | 6 | 6 | |
| 26 | MA-471 | Bag Platform Assy. (Complete w/Hdwe.) | 1 | 1 | 14 | 65-516-28 | Bolt, Hex Hd. 5/16-18 x 1 3/4 | 2 | 2 | |
| 27 | SA-1023-C | Frame & Bag Platform | 1 | 1 | 16 | 935-516 | Lockwasher, Spring 5/16 | 4 | 4 | |
| 30 | SA-1176-A | Clutch Grip Assy. | 1 | 1 | | | | | | |
| 33 | SA-1021-B | Caster & Plate Assy. | 2 | 2 | 18 | 365-8 | Nut, Hex Lock #8-32 | 1 | 1 | |
| 40 | 83-25-B-40 | Throttle Control Assembly | 1 | 1 | 19 | 945-516 | Flatwasher, Plain 5/16 | 2 | 2 | |
| 45 | 80-237-A | Bag Guard | 1 | 1 | 39 | 515-10-24 | Screw, Rd. Hd. Mach. #10-24 x 1 1/2 | 2 | 2 | |
| 46 | 85-09-LC | Back Brace L.H. | 1 | 1 | 41 | 365-10 | Nut, Hex Lock #10-24 | 2 | 2 | |
| 47 | 81-88-A | Wire Clamp | 1 | 1 | | | | | | |
| 50 | 76-36-A | Washer, Special | 4 | 4 | 42 | 65-416-32 | Bolt, Hex Hd. 1/4-20 x 2 | 1 | 1 | |
| 51 | 81-116-A | Tubing End Cap | 2 | 2 | 44 | 945-416 | Flatwasher, Plain 1/4 | 2 | 2 | |
| 52 | 81-120-A | Spacer | 2 | 2 | 48 | 515-8-8 | Screw, Rd. Hd. Mach. #8-32 x 1/2 | 1 | 1 | |
| 53 | 90-71-A | Cable Assembly | 1 | 1 | 49 | 365-416 | Nut, Hex Lock 1/4-20 | 9 | 9 | |
| 54 | 81-23-C | Handle, Upper R.H. | 1 | 1 | | | | | | |
| 55 | 74-167-A | Spring | 1 | 1 | | | | | | |
| 56 | 80-276-A | Clamp, Snap-on | 3 | 3 | | | | | | |
| 57 | 86-157-B | Bag Guard Retainer | 1 | 1 | | | | | | |

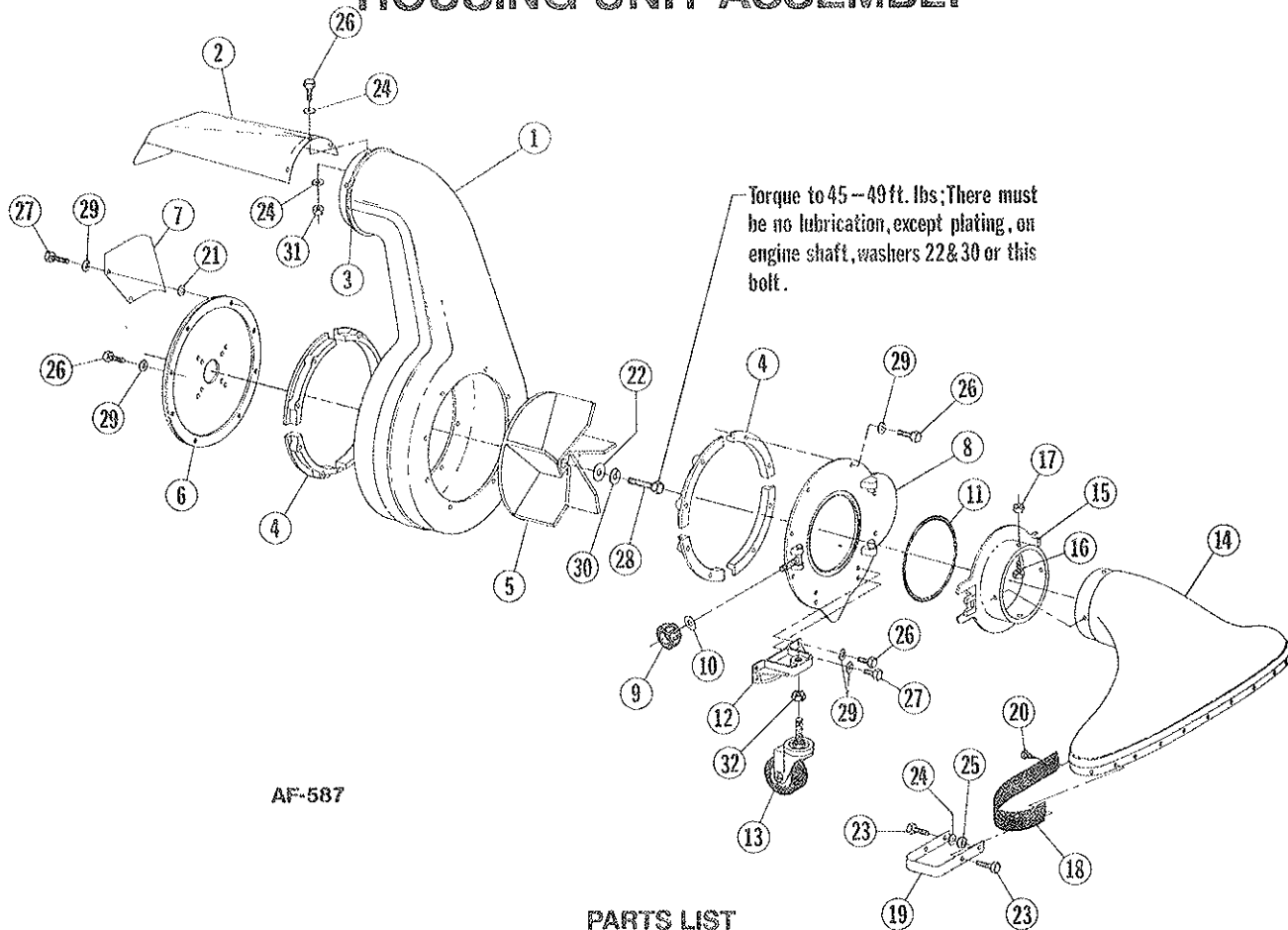
*Supplied with item 1, Dust Bag Assembly, but can be purchased separately.

CHASSIS & DRIVE ASSEMBLY

PARTS LIST

| Ref. No. | Part No. | Description | Qty. Per Unit | | Ref. No. | Part No. | Description | Qty. Per Unit | |
|----------|-------------|------------------------------------|---------------|-------|---|------------|--------------------------------------|---------------|-------|
| | | | SP | SP-LP | | | | SP | SP-LP |
| 1 | 81-25-B | Jack Shaft | 1 | 1 | 78 | 81-44-A | Nylon Pulley | 1 | 1 |
| 2 | 84-41-B32 | Chain, Roller #41-32-P | 1 | 1 | 79 | 81-45-A | Spacer | 1 | 1 |
| 3 | 84-41-B48.5 | Chain Roller #41-48.5-P | 1 | 1 | 80 | 81-31-A | Spring | 1 | 1 |
| 4 | 74-116-A | Bearing Assy. Side Flange | 2 | 2 | 84 | 66-139-A | Flange Bearing | 4 | 4 |
| 5 | 280-09 | Woodruff Key #9 | 1 | 1 | 85 | 81-40-A | Bearing Spacer | 1 | 1 |
| 6 | 84-41-B20.5 | Chain, Roller #41-20.5-P | 1 | 1 | 87 | 88-56-B | Spacer Tube | 1 | 1 |
| 7 | 88-42-A | Bracket Weldment | 1 | 1 | 88 | 88-49-A | Washer | 3 | 3 |
| 8 | 90-69-C | Chain & Belt Guard | 2 | 2 | Items listed below should be purchased at a local hardware store, and must be of grade 5 quality. | | | | |
| 9 | 75-79-A | Knob | 2 | 2 | 14 | 65-416-10 | Bolt, Hex Hd. 1/4-20 x 5/8 | 2 | 2 |
| 10 | 54-227-A | Spacer | 4 | 4 | 21 | 365-416 | Nut, Hex Lock 1/4-20 | 2 | 2 |
| 11 | 68-28-A | Cupped Washer | 1 | 1 | 22 | 945-416 | Flatwasher, Plain 1/4 | 11 | 11 |
| 12 | 80-285-A | Bracket | 1 | 1 | 26 | 60-416-10 | Bolt, Hex Hd 1/4-24 x 5/8 | 1 | 1 |
| 13 | 70-67-B | Lever Clutch Control | 1 | 1 | 27 | 365-616 | Nut, Hex Lock 3/8-16 | 4 | 4 |
| 15 | 82-195-D | Chain Guard Weldment | 1 | 1 | 28 | 335-516 | Nut, Plain Hex 5/16-18 | 1 | 1 |
| 16 | 90-73-A | Sprocket | 1 | 1 | 32 | 65-516-12 | Bolt, Hex Hd. 5/16-18 x 3/4 | 16 | 16 |
| 17 | 90-74-A | Sprocket | 1 | 1 | 34 | 365-516 | Nut, Hex Lock 5/16-18 | 16 | 16 |
| 18 | 57-110-A | Cotter Pin | 2 | 2 | 38 | 935-516 | Lockwasher, Spring 5/16 | 9 | 9 |
| 19 | SA-1129-B | Shifter Rod (Includes items 18) | 1 | 1 | 39 | 65-516-16 | Bolt Hex Hd. 5/16-18 x 1 | 4 | 4 |
| 20 | 83-29-A | Shifter Plate | 1 | 1 | 41 | 65-516-20 | Bolt, Hex Hd. 5/16-18 x 1 1/4 | 1 | 1 |
| 23 | 76-36-A | Washer, Special | 1 | 1 | 43 | 364-516 | Nut, Hex Lock (Thin) 5/16-18 | 5 | 5 |
| 24 | 90-119-B | Brake Lever | 1 | 1 | 46 | 65-416-16 | Bolt, Hex Hd. 1/4-20 x 1 | 1 | 1 |
| 25 | 83-35-A | Spacer | 1 | 1 | 47 | 935-416 | Lockwasher, Spring 1/4 | 3 | 3 |
| 29 | 82-134-B | Shift Rod Weldment | 1 | 1 | 56 | 945-516 | Flatwasher, Plain 5/16 | 14 | 14 |
| *30 | SA-857-A | Transmission | 1 | 1 | 57 | 335-616 | Nut, Plain Hex 3/8-16 | 1 | 1 |
| 31 | 48-277-A | Key, 3/16 Square | 2 | 2 | 58 | 70-516-12 | Bolt, Carriage 5/16-18 x 3/4 | 1 | 1 |
| 33 | 82-20-C | Transmission Bracket Brace | 1 | 1 | 61 | 515-516-12 | Screw, Rd. Hd. Mach 5/16-18 x 3/8 | 1 | 1 |
| 35 | 82-15-D | Transmission Bracket | 1 | 1 | 62 | 65-416-8 | Bolt, Hex Hd. 1/4-20 x 1/2 | 7 | 7 |
| 36 | 90-75-A | Jackshaft Bracket | 1 | 1 | 63 | 65-516-24 | Bolt, Hex Hd. 5/16-18 x 1 1/2 | 2 | 2 |
| 37 | 80-193-A | Spring | 1 | 1 | 64 | 364-616 | Nut, Hex Lock (Thin) 3/8-16 | 1 | 1 |
| 40 | SA-816-B | Bearing Assy. | 2 | 2 | 69 | 65-516-10 | Bolt, Hex Hd. 5/16-18 x 5/8 | 1 | 1 |
| 42 | SA-1243-D | Differential Assy. | 1 | 1 | 74 | 380-332-8 | Cotter Pin | 2 | 2 |
| 44 | 74-168-A | Wheel Spacer | 2 | 2 | 76 | 65-616-16 | Bolt, Hex Hd. 3/8-16 x 1 | 4 | 4 |
| 45 | 68-310-B | Wheel Assembly | 2 | 2 | 81 | 72-516-12 | Bolt, Self Tapping 5/16-18 x 3/4 | 5 | 5 |
| | 68-311-B | * Wheel | 2 | 2 | 83 | 364-416 | Nut, Hex Lock (Thin) 1/4-20 | 4 | 4 |
| | 68-312-A | * Tire 5.30/4.50 x 6 | 2 | 2 | * (See Transmission Page) | | | | |
| 48 | 63-304-A | Bag Hook | 1 | 1 | | | | | |
| 49 | 82-159-A | Spring Support Bracket | 1 | 1 | | | | | |
| 50 | 81-19-D | Chassis Weldment | 1 | 1 | | | | | |
| 51 | 90-66-B | Drive Shaft | 1 | 1 | | | | | |
| 52 | 66-138-A | Seal Master Bearing | 2 | 2 | | | | | |
| 53 | 81-43-A | Spring Bracket | 1 | 1 | | | | | |
| 54 | 74-86-A | Drive Sheave | 1 | 1 | | | | | |
| 55 | 90-44-D | Clutch Bracket | 1 | 1 | | | | | |
| 59 | 80-162-A | Shifter Spring | 1 | 1 | | | | | |
| 66 | 66-431-A | Washer, Special | 4 | 4 | | | | | |
| 67 | 81-42-A | Spacer | 2 | 2 | | | | | |
| 68 | SA-968-A | Tensioner & Roller Assy. | 1 | 1 | | | | | |
| 70 | 59-29-A | Spacer | 1 | 1 | | | | | |
| 72 | 82-141-B | Adjusting Plate | 1 | 1 | | | | | |
| 73 | 80-44-A | Clevis Pin | 2 | 2 | | | | | |
| 75 | 80-32-A | Bracket & Nut | 1 | 1 | | | | | |
| 77 | 81-166-A | Washer, Special | 4 | 4 | | | | | |

HOUSING UNIT ASSEMBLY



AF-587

PARTS LIST

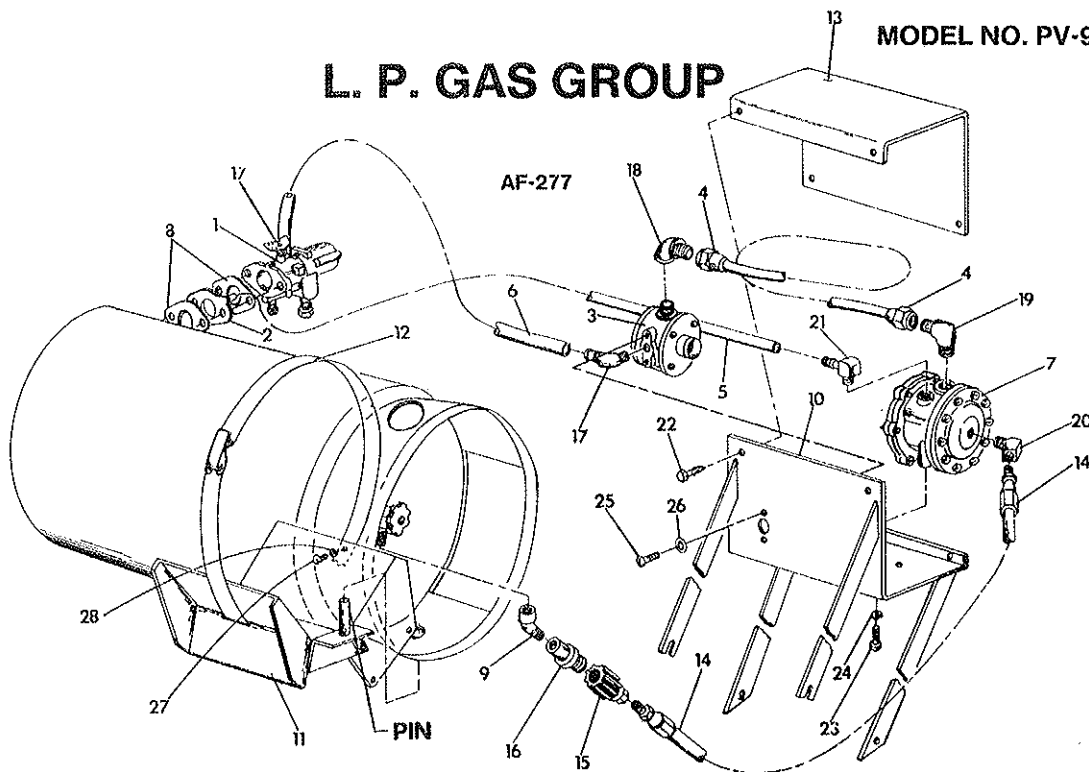
| Ref. No. | Part No. | Description | Qty. Per Unit | | Ref. No. | Part No. | Description | Qty. Per Unit | |
|----------|-----------|---------------------------------|---------------|-------|---|------------|-------------------------------|---------------|-------|
| | | | SP | SP-LP | | | | SP | SP-LP |
| 1 | 70-103-D | Housing Assembly | 1 | 1 | 21 | 54-277-A | Spacer | 2 | 2 |
| 2 | 85-110-B | Spin-Pak® | 1 | 1 | 22 | 82-138-B-3 | Special Washer | 2 | 2 |
| 3 | 85-59-C | Retaining Ring | 1 | 1 | Items listed below should be purchased at a local hardware store, and must be of grade 5 quality. | | | | |
| 4 | 64-78-C | Anti-Wrap Segment | 8 | 8 | 23 | 65-416-12 | Bolt, Hex Hd. 1/4-20 x 3/4 | 8 | 8 |
| 5 | 72-175-D | Fan Wheel | 1 | 1 | 24 | 945-416 | Flatwasher Plain 1/4 | 16 | 16 |
| 6 | 84-372-C | Back Cover & Gasket | 1 | 1 | 25 | 364-416 | Nut, Hex Lock (Thin) 1/4-20 | 8 | 8 |
| 7 | 72-241-B | Heat Shield | 1 | 1 | 26 | 65-416-16 | Bolt, Hex Hd. 1/4-20 x 1 | 12 | 12 |
| 8 | SA-1389-D | Front Cover Assembly | 1 | 1 | 27 | 60-416-20 | Bolt Hex Hd. 1/4-20 x 1 1/4 | 4 | 4 |
| * 9 | 80-29-A | ◦ Adjusting Knob | 1 | 1 | ***28 | 60-716-20 | Bolt, Hex Hd. 7/16-20 x 1 1/4 | 1 | 1 |
| *10 | 945-816 | ◦ Flatwasher, Plain 1/2 | 1 | 1 | 29 | 935-416 | Lockwasher, Spring 1/4 | 16 | 16 |
| *11 | 63-190-A | ◦ O-Ring, Gasket | 1 | 1 | 30 | 935-716 | Lockwasher, Spring 7/16 | 1 | 1 |
| 12 | 66-430-A | Caster Bracket | 1 | 1 | 31 | 365-416 | Nut, Hex Lock 1/4-20 | 4 | 4 |
| 13 | 64-71-A | Caster, Stem Type | 1 | 1 | 32 | 340-1216 | Nut, Hex Jam 3/4-10 | 1 | 1 |
| 14 | SA-647-D | Intake Housing Assembly 30" | 1 | 1 | | | | | |
| **15 | 63-195-D | ◦ Collar | 1 | 1 | | | | | |
| **16 | 65-416-10 | ◦ Bolt, Hex Hd. 1/4-20 x 5/8 | 4 | 4 | | | | | |
| **17 | 369-416 | ◦ Nut, Serrated Hex Lock 1/4-20 | 4 | 4 | | | | | |
| 18 | 73-67-D | Skirt | 1 | 1 | | | | | |
| 19 | 62-98-C | Guard | 2 | 2 | | | | | |
| 20 | 80-332-A | Fastener | 15 | 15 | | | | | |

* Supplied with item 8, Front Cover Assembly, but can be purchased separately.

** Supplied with item 14, Intake Housing Assembly, but can be purchased separately.

*** Torque 45 to 49 ft. lbs.

L. P. GAS GROUP



NOTE: All parts listed are under the manufacturers' name and part number. Replacement parts should be purchased directly from each company listed with a complete description of the part and part number. Addresses of manufacturers who stock parts are listed in the assembly instructions. Parts listed under the "Standard Parts" can be purchased from most hardware stores.

PARTS LIST

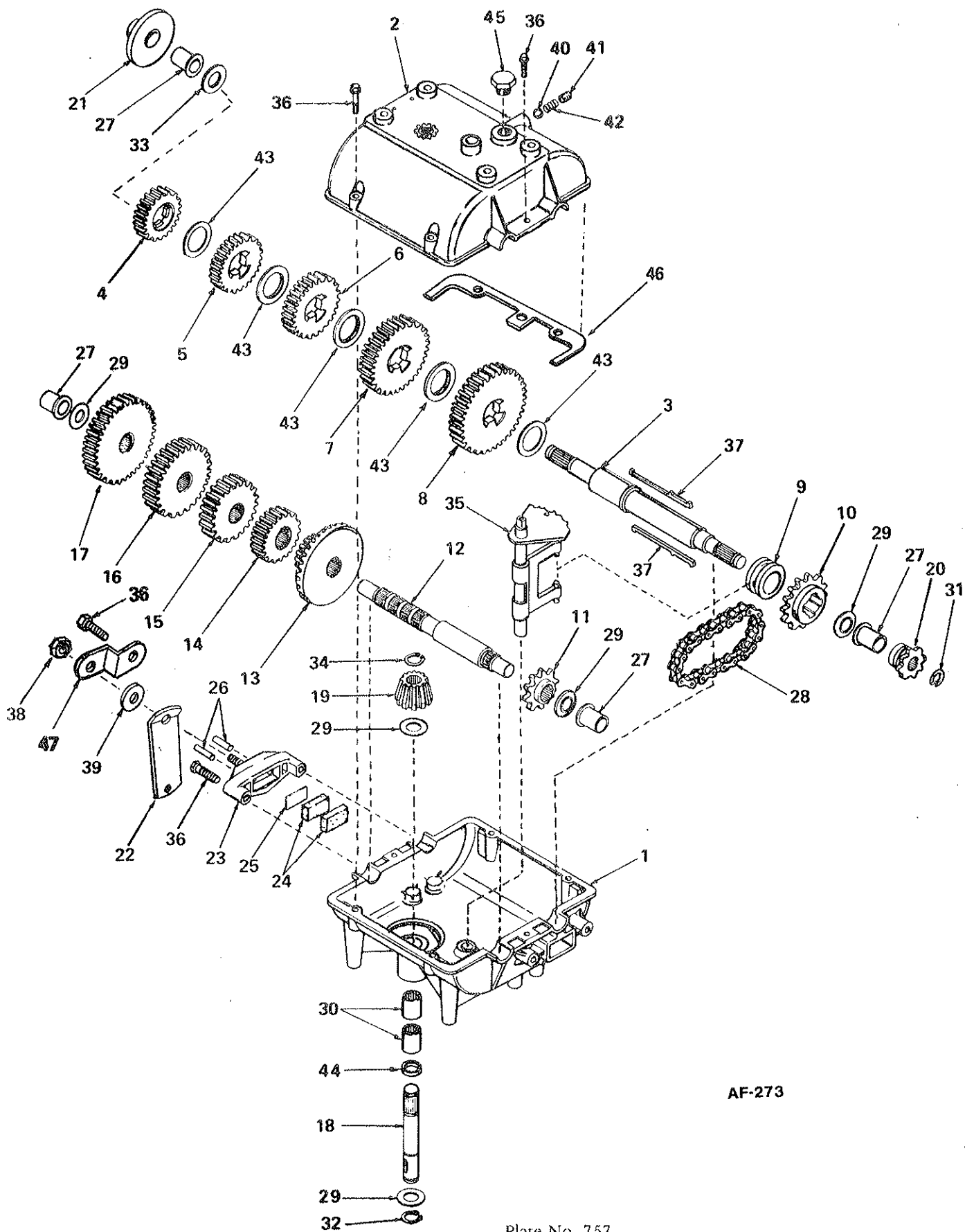
| Ref. No. | Part No. | Description | Qty. | Ref. No. | Part No. | Description | Qty. |
|--|----------|--|------|---|------------|--|------|
| Garretson Parts | | | | Standard Parts | | | |
| 1. | 220-0118 | Carburetor | 1 | 17. | — | 1/4 NPT Male x 90° Hose Barb | 2 |
| 2. | 180-02 | Idler Plate | 1 | 18. | — | Female 90° Elbow | 1 |
| 3. | 074-131 | Regulator, Pressure Md. #S2 | 1 | 19. | — | 5/8-18 x 1/4-18, Female Thread Male 90° Elbow | 1 |
| 4. | 491-12 | Fuel Line 12" Lg. | 1 | 20. | — | 3/8 Tube x 1/4 Pipe Thread Street Elbow 45°, 1/4-18 NPT | 1 |
| 5. | 450-99 | Vacuum Line, 18" Lg., Hose | 1 | 21. | — | Male 1/8 NPT x 1/4 Hose Barb | 4 |
| Gates Rubber Company Parts | | | | Items listed below should be purchased at a local hardware store, and must be of grade 5 quality. | | | |
| 6. | 3220-E | Fuel Line Carburetor, 12" Lg., Hose | 1 | 22. | 72-416-10 | Bolt, Hex Hd. (Thread Cutting) 1/4-20 x 5/8 | 4 |
| A.J. Industries Parts | | | | 23. | 65-416-12 | Bolt, Hex Hd. 1/4-20 x 3/4 | 2 |
| 7. | VFF-30 | Fuelock, Vacuum & Filter | 1 | 24. | 935-416 | Lockwasher, Spring 1/4 | 2 |
| Kohler Company Parts | | | | 25. | 504-1032-8 | Screw, Rd. Hd. Self Tapping (Type F) | 2 |
| 8. | 210223 | Gasket, Carburetor | 2 | 26. | 936-10 | Lockwasher, Int. Tooth #10 | 2 |
| Imperial-Eastman Part or Equivalent | | | | 27. | 515-10-6 | Screw, Rd. Hd. Mach. 10-24 x 3/8 | 1 |
| *9. | 124-B | Street Elbow, Brass 3/8 x 45° 3000 lbs. test | 1 | 28. | 346-10 | Speed Nut #10 | 1 |
| Parker Sweeper Company Parts | | | | | | | |
| 10. | 74-142-C | Regulator Bracket | 1 | | | | |
| 11. | 65-565-C | Tank Bracket | 1 | | | | |
| 12. | 80-278-B | Tank Hold Down Band | 1 | | | | |
| 13. | 85-63-C | Regulator Mount Cover | 1 | | | | |
| 14. | 74-152-A | Fuel Line Inlet, 24" Lg. | 1 | | | | |
| Rego Dist. Parts | | | | | | | |
| 15. | 7141-F | Connector, Female, 1/4-18 400 PSI | 1 | | | | |
| 16. | 7141-M | Connector, Male, Safety Check, 3/8-18 400 PSI | 1 | | | | |

*Can be purchased through a local Imperial-Eastman Distributor.

PEERLESS TRANSMISSION

MODEL 750-A

Five Speed



AF-273

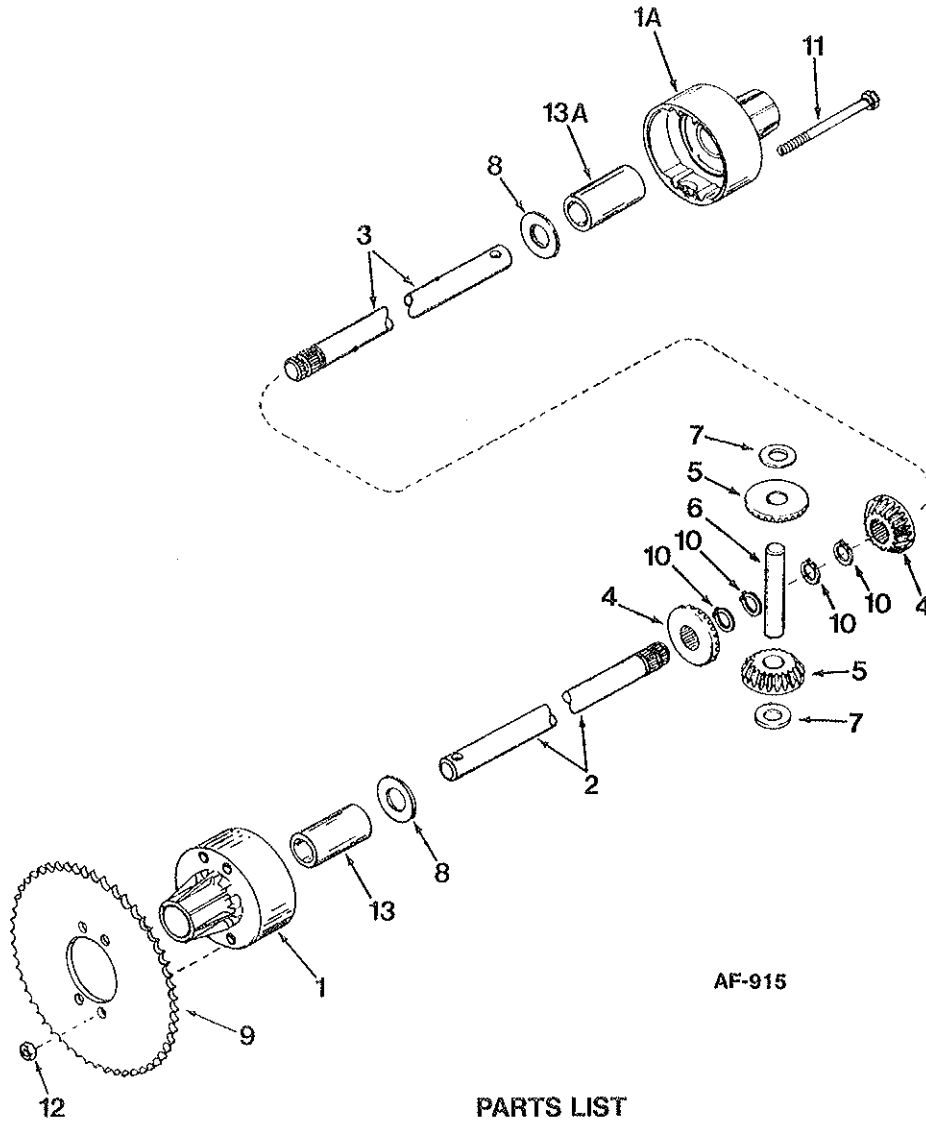
REPAIR PARTS

PEERLESS "750"-A TRANSMISSION

PARTS LIST

| Ref. No. | Part No. | Description |
|----------|----------|---|
| 1 | 770061 | Case, Transmission |
| 2 | 772088 | Cover, Transmission |
| 3 | 776161 | Shaft, Output & Brake |
| 4 | 778121A | Gear, Spur (20 teeth) |
| 5 | 778122A | Gear, Spur (22 teeth) |
| 6 | 778123A | Gear, Spur (25 teeth) |
| 7 | 778124A | Gear, Spur (30 teeth) |
| 8 | 778125 | Gear, Spur (35 teeth) |
| 9 | 784266 | Collar, Shift |
| 10 | 786060 | Sprocket (14 teeth) |
| 11 | 786061 | Sprocket (10 teeth) |
| 12 | 776134 | Shaft, Counter |
| 13 | 778109 | Gear, Bevel (42 tooth & 15 tooth spur gear) |
| 14 | 778126A | Gear, Spur (20 teeth) |
| 15 | 778127A | Gear, Spur (25 teeth) |
| 16 | 778128A | Gear, Spur (28 teeth) |
| 17 | 778129A | Gear, Spur (30 teeth) |
| 18 | 776135 | Shaft, Input |
| 19 | 778113A | Bevel Pinion, Input |
| 20 | 786047 | Sprocket (8 teeth) |
| 21 | 790003 | Disk, Brake |
| 22 | 790013 | Lever, Brake |
| 23 | 790025 | Holder, Brake pad |
| 24 | 790006 | Pad, Brake |
| 25 | 790007 | Plate, Brake pad |
| 26 | 786026 | Pin, Dowel |
| 27 | 780105A | Bushing, Flanged |
| 28 | 786062 | Chain, Roller (No. 41 chain, 22 links) |
| 29 | 780072 | Washer, Thrust |
| 30 | 780086 | Bearing, Needle |
| 31 | 792072 | Ring, Retaining |
| 32 | 792035 | Ring, Retaining |
| 33 | 780109 | Washer |
| 34 | 788040 | Ring, Retaining |
| 35 | 784267 | Rod & Fork Assy., Shift |
| 36 | 792073 | Screw, Hex. Hd. Taptite, 1/4-20x2 1/4 |
| 37 | 792089A | Key |
| 38 | 792075 | Nut, Lock, 5/16-24 |
| 39 | 792076 | Washer, Flat, 5/16 |
| 40 | 792077 | Ball, Steel, 5/16" |
| 41 | 792078 | Screw, Set, 3/8-16x3/8 |
| 42 | 792079 | Spring |
| 43 | 780108 | Washer, Thrust |
| 44 | 792001 | "O" Ring |
| 45 | 792074 | Plug |
| 46 | 788054 | Gasket |
| 47 | 786046 | Bracket |

PEERLESS DIFFERENTIAL
MODEL 100-092

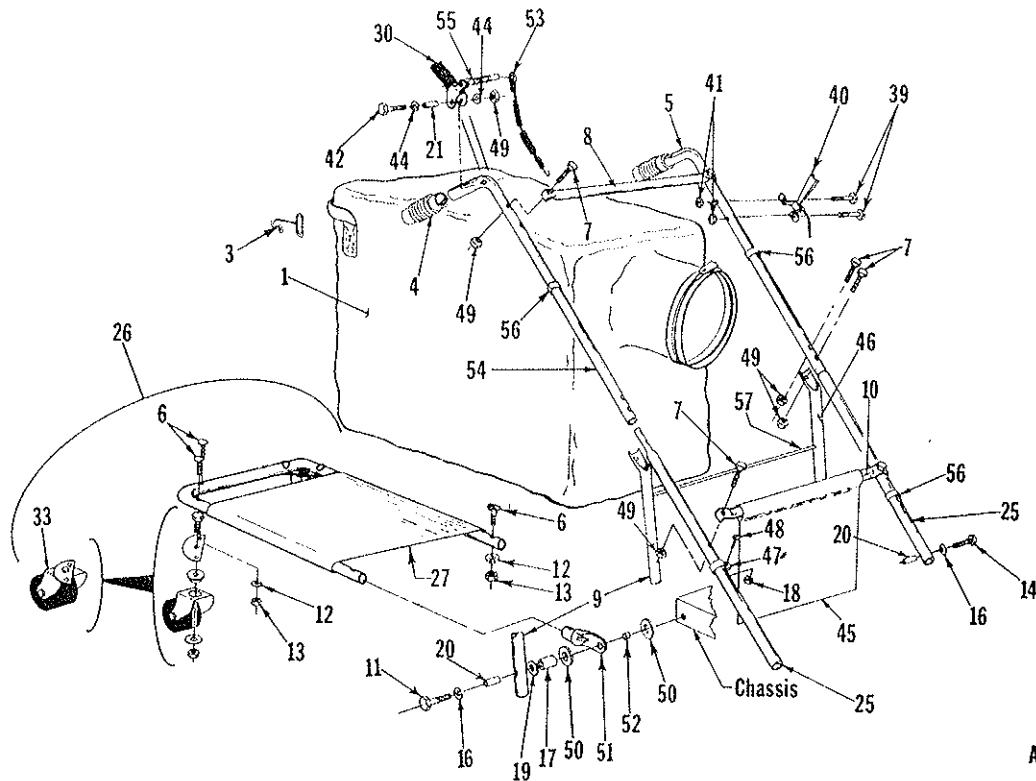


AF-915

PARTS LIST

| Ref. No. | Part No. | Description |
|----------|----------|--|
| 1 | 774484 | Housing, Differential carrier (Incl. No. 13) |
| 1A | 774485 | Housing, Differential carrier (Incl. No 13A) |
| 2 | 774774 | Axle (8-3/4" long) |
| 3 | 774773A | Axle (18-3/8" long) |
| 4 | 778221 | Gear, Bevel |
| 5 | 778068 | Gear, Pinion |
| 6 | 786040 | Pin, Drive |
| 7 | 780096 | Washer, Thrust |
| 8 | 780001 | Washer |
| 9 | 786042 | Sprocket |
| 10 | 792125 | Ring, Retaining (Pkg. of 2) |
| 11 | 792041 | Screw, Flanged Hex Hd., 5/16-18 x 3-3/4 |
| 12 | 792042 | Nut, Lock, 5/16-18 |
| 13 | 780077 | Bushing |
| 13A | 780124 | Bushing |

HANDLE ASSEMBLY



AF-280

PARTS LIST

| Ref. No. | Part No. | Description | Qty. Per Unit | | Items listed below should be purchased at a local hardware store, and must be of grade 5 quality. | Ref. No. | Part No. | Description | Qty. Per Unit | |
|----------|----------------------|---------------------------------------|---------------|-------|---|----------|-----------|-------------------------------------|---------------|-------|
| | | | SP | SP-LP | | | | | SP | SP-LP |
| 1 | MA-419 | Dust Bag Assembly | 1 | 1 | | | | | | |
| *3 | 63-304-A | Bag Hook | 2 | 2 | | | | | | |
| 4 | 80-232-A | Handle Grip | 2 | 2 | | | | | | |
| 5 | 83-18-C | Handle, Upper L.H. | 1 | 1 | | | | | | |
| 8 | 81-04-B | Cross Brace, Upper | 1 | 1 | | 6 | 69-416-24 | Bolt, Contour Hd. 1/4-20 x 1 1/2 | 6 | 6 |
| 9 | 85-09-RC | Back Brace R.H. | 1 | 1 | | 7 | 65-416-24 | Bolt, Hex Hd. 1/4-20 x 1 1/2 | 8 | 8 |
| 10 | 81-47-B | Cross Brace, Lower | 1 | 1 | | 11 | 65-516-40 | Bolt, Hex Hd. 5/16-18 x 2 1/2 | 2 | 2 |
| 17 | 81-42-A | Spacer | 2 | 2 | | 12 | 935-416 | Lockwasher, Spring 1/4 | 6 | 6 |
| 20 | 80-238-A | Inserts | 4 | 4 | | 13 | 335-416 | Nut, Plain Hex 1/4-20 | 6 | 6 |
| 21 | 80-225-A | Spacer | 1 | 1 | | 14 | 65-516-28 | Bolt, Hex Hd. 5/16-18 x 1 3/4 | 2 | 2 |
| 25 | 82-242-B | Middle Handle | 2 | 2 | | 16 | 935-516 | Lockwasher, Spring 5/16 | 4 | 4 |
| 26 | MA-471 | Bag Platform Assy. (Complete w/Hdwe.) | 1 | 1 | | 18 | 365-8 | Nut, Hex Lock #8-32 | 1 | 1 |
| 27 | SA-1023-C | Frame & Bag Platform | 1 | 1 | | 19 | 945-516 | Flatwasher, Plain 5/16 | 2 | 2 |
| 30 | SA-1176-A | Clutch Grip Assy. | 1 | 1 | | 39 | 515-10-24 | Screw, Rd. Hd. Mach. #10-24 x 1 1/2 | 2 | 2 |
| 33 | SA-1021-B | Caster & Plate Assy. | 2 | 2 | | 41 | 365-10 | Nut, Hex Lock #10-24 | 2 | 2 |
| 40 | 83-25-B-40 | Throttle Control Assembly | 1 | 1 | | 42 | 65-416-32 | Bolt, Hex Hd. 1/4-20 x 2 | 1 | 1 |
| 45 | 80-237-A | Bag Guard | 1 | 1 | | 44 | 945-416 | Flatwasher, Plain 1/4 | 2 | 2 |
| 46 | 85-09-LC | Back Brace L.H. | 1 | 1 | | 48 | 515-8-8 | Screw, Rd. Hd. Mach. #8-32 x 1/2 | 1 | 1 |
| 47 | 81-88-A | Wire Clamp | 1 | 1 | | 49 | 365-416 | Nut, Hex Lock 1/4-20 | 9 | 9 |
| 50 | 76-36-A | Washer, Special | 4 | 4 | | | | | | |
| 51 | 81-116-A | Tubing End Cap | 2 | 2 | | | | | | |
| 52 | 81-120-A | Spacer | 2 | 2 | | | | | | |
| 53 | 90-71-A | Cable Assembly | 1 | 1 | | | | | | |
| 54 | 81-23-C | Handle, Upper R.H. | 1 | 1 | | | | | | |
| 55 | 74-167-A | Spring | 1 | 1 | | | | | | |
| 56 | 80-276-A | Clamp, Snap-on | 3 | 3 | | | | | | |
| 57 | 86-157-B | Bag Guard Retainer | 1 | 1 | | | | | | |

*Supplied with item 1, Dust Bag Assembly, but can be purchased separately.

CHASSIS & DRIVE ASSEMBLY

PARTS LIST

| Ref. No. | Part No. | Description | Qty. Per Unit | | Ref. No. | Part No. | Description | Qty. Per Unit | | |
|----------|-------------|------------------------------------|---------------|-------|---|------------|--------------------------------------|---------------|-------|-------|
| | | | SP | SP-LP | | | | SP | SP-LP | |
| 1 | 81-25-B | Jack Shaft | 1 | 1 | 78 | 81-44-A | Nylon Pulley | 1 | 1 | |
| 2 | 84-41-B32 | Chain, Roller #41-32-P | 1 | 1 | 79 | 81-45-A | Spacer | 1 | 1 | |
| 3 | 84-41-B48.5 | Chain Roller #41-48.5-P | 1 | 1 | 80 | 81-31-A | Spring | 1 | 1 | |
| 4 | 74-116-A | Bearing Assy. Side Flange | 2 | 2 | 84 | 66-139-A | Flange Bearing | 4 | 4 | |
| 5 | 280-09 | Woodruff Key #9 | 1 | 1 | 85 | 81-40-A | Bearing Spacer | 1 | 1 | |
| 6 | 84-41-B20.5 | Chain, Roller #41-20.5-P | 1 | 1 | 87 | 88-56-B | Spacer Tube | 1 | 1 | |
| 7 | 88-42-A | Bracket Weldment | 1 | 1 | 88 | 88-49-A | Washer | 3 | 3 | |
| 8 | 90-69-C | Chain & Belt Guard | 2 | 2 | Items listed below should be purchased at a local hardware store, and must be of grade 5 quality. | | | | | |
| 9 | 75-79-A | Knob | 2 | 2 | Ref. No. | Part No. | Description | Qty. Per Unit | SP | SP-LP |
| 10 | 54-227-A | Spacer | 4 | 4 | 14 | 65-416-10 | Bolt, Hex Hd. 1/4-20 x 5/8 | 2 | 2 | |
| 11 | 68-28-A | Cupped Washer | 1 | 1 | 21 | 365-416 | Nut, Hex Lock 1/4-20 | 2 | 2 | |
| 12 | 80-285-A | Bracket | 1 | 1 | 22 | 945-416 | Flatwasher, Plain 1/4 | 11 | 11 | |
| 13 | 70-67-B | Lever Clutch Control | 1 | 1 | 26 | 60-416-10 | Bolt, Hex Hd 1/4-24 x 5/8 | 1 | 1 | |
| 15 | 82-195-D | Chain Guard Weldment | 1 | 1 | 27 | 365-616 | Nut, Hex Lock 3/8-16 | 4 | 4 | |
| 16 | 90-73-A | Sprocket | 1 | 1 | 28 | 335-516 | Nut, Plain Hex 5/16-18 | 1 | 1 | |
| 17 | 90-74-A | Sprocket | 1 | 1 | 32 | 65-516-12 | Bolt, Hex Hd. 5/16-18 x 3/4 | 16 | 16 | |
| 18 | 57-110-A | Cotter Pin | 2 | 2 | 34 | 365-516 | Nut, Hex Lock 5/16-18 | 16 | 16 | |
| 19 | SA-1129-B | Shifter Rod (Includes items 18) | 1 | 1 | 38 | 935-516 | Lockwasher, Spring 5/16 | 9 | 9 | |
| 20 | 83-29-A | Shifter Plate | 1 | 1 | 39 | 65-516-16 | Bolt Hex Hd. 5/16-18 x 1 | 4 | 4 | |
| 23 | 76-36-A | Washer, Special | 1 | 1 | 41 | 65-516-20 | Bolt, Hex Hd. 5/16-18 x 1 1/4 | 1 | 1 | |
| 24 | 90-119-B | Brake Lever | 1 | 1 | 43 | 364-516 | Nut, Hex Lock (Thin) 5/16-18 | 5 | 5 | |
| 25 | 83-35-A | Spacer | 1 | 1 | 46 | 65-416-16 | Bolt, Hex Hd. 1/4-20 x 1 | 1 | 1 | |
| 29 | 82-134-B | Shift Rod Weldment | 1 | 1 | 47 | 935-416 | Lockwasher, Spring 1/4 | 3 | 3 | |
| *30 | SA-857-A | Transmission | 1 | 1 | 56 | 945-516 | Flatwasher, Plain 5/16 | 14 | 14 | |
| 31 | 48-277-A | Key, 3/16 Square | 2 | 2 | 57 | 335-616 | Nut, Plain Hex 3/8-16 | 1 | 1 | |
| 33 | 82-20-C | Transmission Bracket Brace | 1 | 1 | 58 | 70-516-12 | Bolt, Carriage 5/16-18 x 3/4 | 1 | 1 | |
| 35 | 82-15-D | Transmission Bracket | 1 | 1 | 61 | 515-516-12 | Screw, Rd. Hd. Mach 5/16-18 x 3/8 | 1 | 1 | |
| 36 | 90-75-A | Jackshaft Bracket | 1 | 1 | 62 | 65-416-8 | Bolt, Hex Hd. 1/4-20 x 1/2 | 7 | 7 | |
| 37 | 80-193-A | Spring | 1 | 1 | 63 | 65-516-24 | Bolt, Hex Hd. 5/16-18 x 1 1/2 | 2 | 2 | |
| 40 | SA-816-B | Bearing Assy. | 2 | 2 | 64 | 364-616 | Nut, Hex Lock (Thin) 3/8-16 | 1 | 1 | |
| 42 | SA-1243-D | Differential Assy. | 1 | 1 | 69 | 65-516-10 | Bolt, Hex Hd. 5/16-18 x 5/8 | 1 | 1 | |
| 44 | 74-168-A | Wheel Spacer | 2 | 2 | 74 | 380-332-8 | Cotter Pin | 2 | 2 | |
| 45 | 68-310-B | Wheel Assembly | 2 | 2 | 76 | 65-616-16 | Bolt, Hex Hd. 3/8-16 x 1 | 4 | 4 | |
| | 68-311-B | • Wheel | 2 | 2 | 81 | 72-516-12 | Bolt, Self Tapping 5/16-18 x 3/4 | 5 | 5 | |
| | 68-312-A | • Tire 5.30/4.50 x 6 | 2 | 2 | 83 | 364-416 | Nut, Hex Lock (Thin) 1/4-20 | 4 | 4 | |
| 48 | 63-304-A | Bag Hook | 1 | 1 | | | | | | |
| 49 | 82-159-A | Spring Support Bracket | 1 | 1 | | | | | | |
| 50 | 81-19-D | Chassis Weldment | 1 | 1 | | | | | | |
| 51 | 90-66-B | Drive Shaft | 1 | 1 | | | | | | |
| 52 | 66-138-A | Seal Master Bearing | 2 | 2 | | | | | | |
| 53 | 81-43-A | Spring Bracket | 1 | 1 | | | | | | |
| 54 | 74-86-A | Drive Sheave | 1 | 1 | | | | | | |
| 55 | 90-44-D | Clutch Bracket | 1 | 1 | | | | | | |
| 59 | 80-162-A | Shifter Spring | 1 | 1 | | | | | | |
| 66 | 66-431-A | Washer, Special | 4 | 4 | | | | | | |
| 67 | 81-42-A | Spacer | 2 | 2 | | | | | | |
| 68 | SA-968-A | Tensioner & Roller Assy. | 1 | 1 | | | | | | |
| 70 | 59-29-A | Spacer | 1 | 1 | | | | | | |
| 72 | 82-141-B | Adjusting Plate | 1 | 1 | | | | | | |
| 73 | 80-44-A | Clevis Pin | 2 | 2 | | | | | | |
| 75 | 80-32-A | Bracket & Nut | 1 | 1 | | | | | | |
| 77 | 81-166-A | Washer, Special | 4 | 4 | | | | | | |

* (See Transmission Page)

