

***Minuteman***<sup>®</sup>  
***Parker***<sup>®</sup>

Model: SL8430

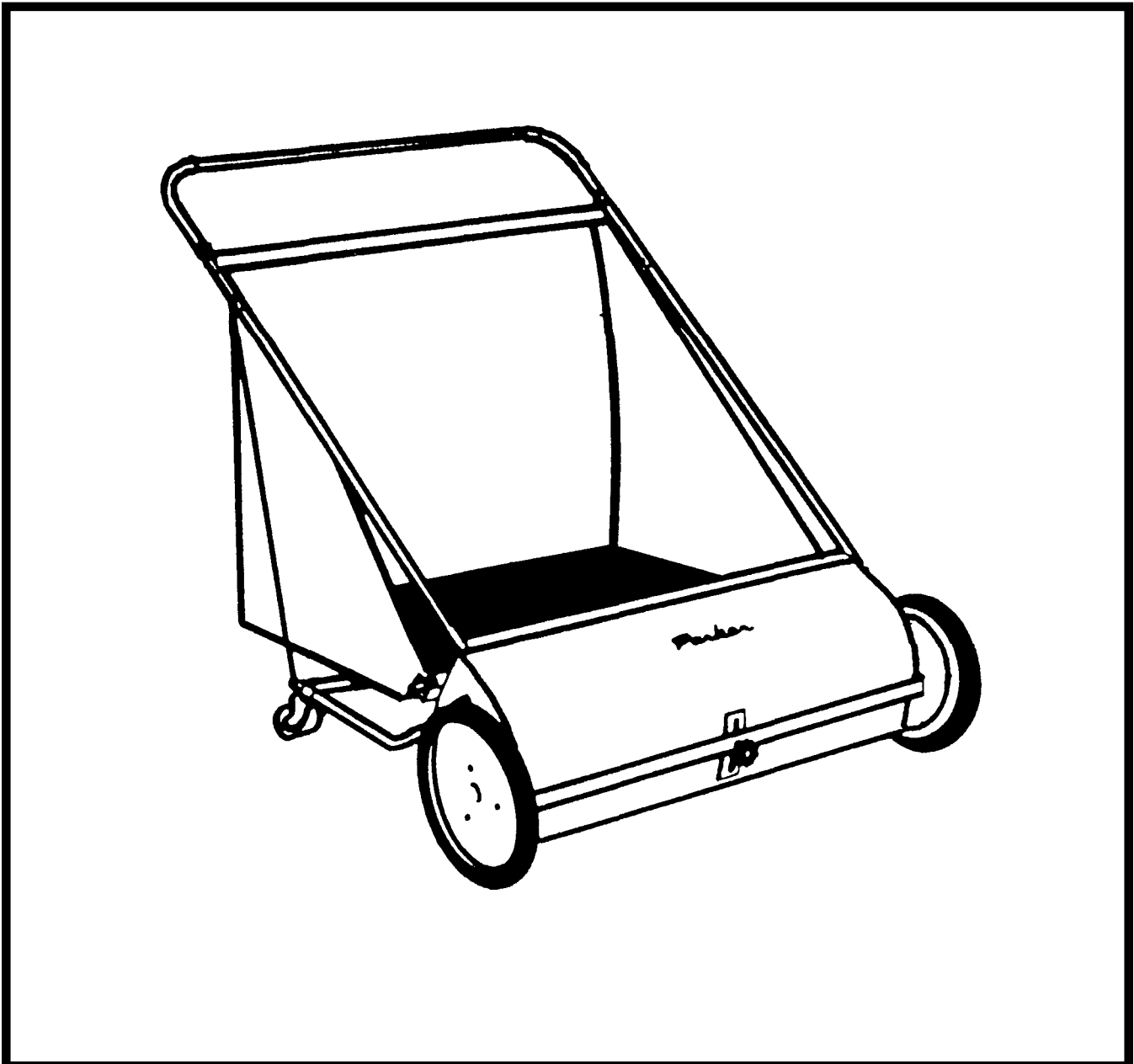
## Sweep-A-Lawn

OPERATION

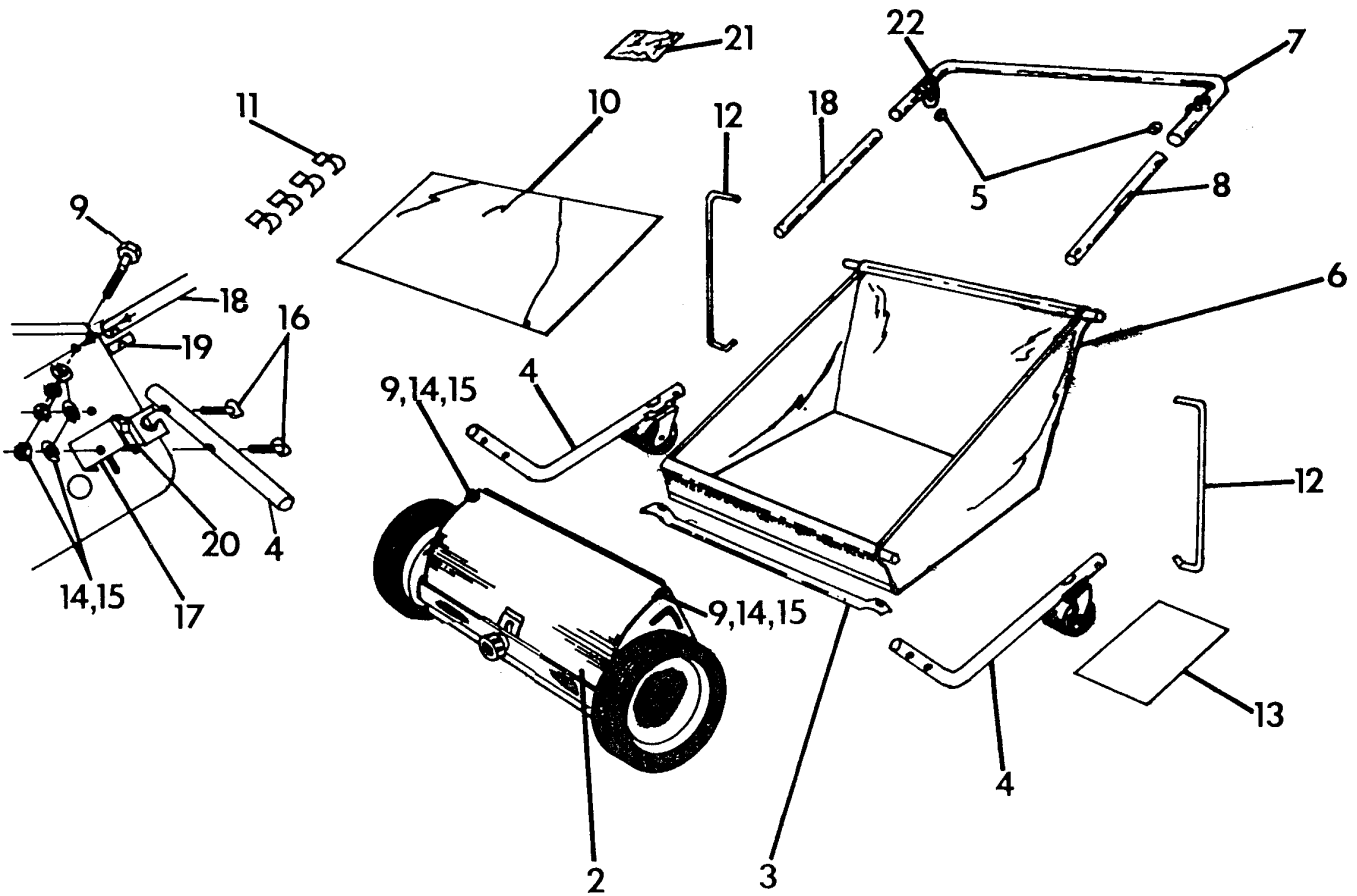
SERVICE

PARTS

CARE



# UNPACKING INSTRUCTIONS



## AFTER YOU HAVE UNPACKED THE CARTON, IDENTIFY THE FOLLOWING ITEMS:

- |     |                                           |     |                                                                  |
|-----|-------------------------------------------|-----|------------------------------------------------------------------|
| 1.  | Tow Hitch (optional accessory, not shown) | 13. | Owner's Manual                                                   |
| 2.  | Sweeper Head Assembly                     | 14. | Hex Nuts, 1/4-20 (6)                                             |
| 3.  | Cross Brace                               | 15. | Lockwashers, 1/4 (6)                                             |
| 4.  | Support Frames (2)                        | 16. | Contour Bolts, 1/4-20 x 1 1/4 (4)                                |
| 5.  | Retainers (2)                             | 17. | Wind Apron Brackets (2)                                          |
| 6.  | Basket Assembly                           | 18. | Lower Handle R.H.                                                |
| 7.  | Upper Handle                              | 19. | Tube Clamps (2)                                                  |
| 8.  | Lower Handle L.H.                         | 20. | Basket Retainer (2)                                              |
| 9.  | Hex Hd. Bolts, 1/4-20 x 1 1/4 (2)         | 21. | Plastic Bag (contains items 5 and 11, and is stapled to item 13) |
| 10. | Wind Apron                                | 22. | Basket Supports (2)                                              |
| 11. | Wind Apron Clips                          |     |                                                                  |
| 12. | Braces (2)                                |     |                                                                  |

## TOOLS REQUIRED FOR ASSEMBLY:

1. 7/16" Wrench
2. 1/2" Wrench (2)

# ASSEMBLY INSTRUCTIONS

**YOUR SAFETY IS OUR CONCERN. READ ALL SAFETY RULES AND OPERATING INSTRUCTIONS BEFORE ATTEMPTING TO OPERATE THIS EQUIPMENT. FAILURE TO FOLLOW SAFETY RULES AND OPERATING INSTRUCTIONS MAY RESULT IN SERIOUS INJURY.**

The unit covered by this owner's guide is shipped complete in one carton and will take a minimum amount of time and effort to assemble. Follow all assembly instructions carefully. Whenever the terms left hand, right hand, or L.H., R.H. are used, it should be understood to mean from a position behind the unit in the direction of forward travel. All hardware is on the unit in its proper location. If something is missing, notify the dealer/distributor where unit was purchased. If unable to obtain parts locally, contact the Parker Sweeper Company.

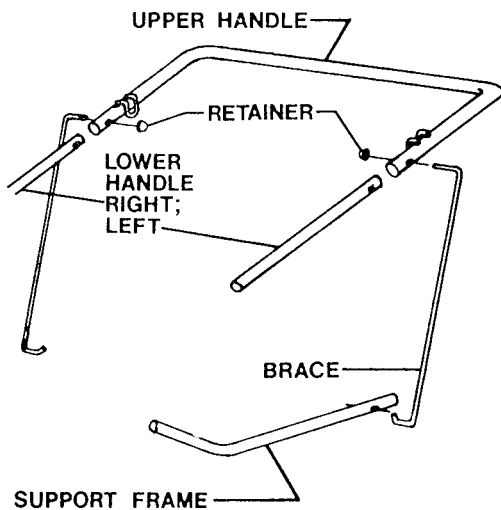
1. Remove the unit and hardware from the main carton. Do **Not** discard any inserts until unit is completely assembled.
2. NOTE: Identification of these parts will be determined in instructions at point of assembly.
3. Read through the owner's guide once to familiarize yourself with the assembly procedure, maintenance and operation of the unit.
4. Many times the exploded views at the back of this owner's guide can aid in the assembly of the unit.
1. Remove Lower Handles (3) & (4) from shipping position.
2. Place the lower holes on Wind Apron (17) in alignment with top side holes in Hood.
3. Attach Flatwashers (23) onto Hex Hd. Bolts (20) and place Bolts (20) through holes in Wind Apron (17) and Hood.
4. Fold Wind Apron over so item does not interfere with assembling Handles.
5. Place lower end of Lower Handle L.H. (3) inside of Hood and attach to Hex Hd. Bolt (20).

NOTE: See AF-844 Frame & Basket Assembly for reference to numbers used in the following instructions.

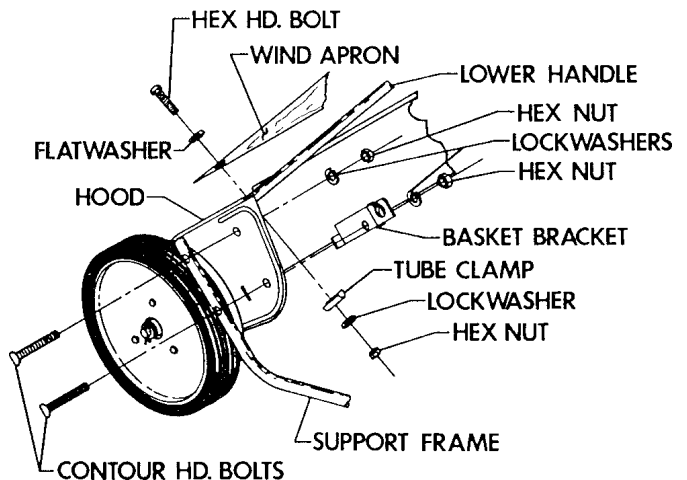
NOTE: Lower Handle L.H. (3) can be identified by square holes in the Tubing.

## SUPPORT FRAME ASSEMBLY

1. Remove hardware from Hood sides.
2. Place Basket Brackets (8) and (9) ends into slots on Hood sides.
3. Align holes in Basket Brackets (8) & (9), Hood sides, and Support Frames (1).
4. Attach Contour Hd. bolts (21) to upper and lower side holes on Support Frames (1), Hood and Basket Brackets (8) & (9).
5. Secure with Lockwashers (24) and Hex Nuts (25).
6. Attach Tube Clamp (19) to Bolt (20). Secure with Lockwasher (24) and Hex Nut (25), but do not tighten.
7. Place lower end of Lower Handle R.H. (4) inside of Hood and attach to Hex Hd. Bolt (20).
8. Repeat step 6.
9. Place curved end of Braces (15) into back side holes on Support Frames (1).
10. Attach Upper Handle Assembly (5) over the ends of Lower Handles (3) & (4) and align side holes in both Handles.
11. With holes aligned place braces (15) through holes of Upper Handle Assembly (5) and Lower Handles (3) & (4). Secure with Retainers (16).

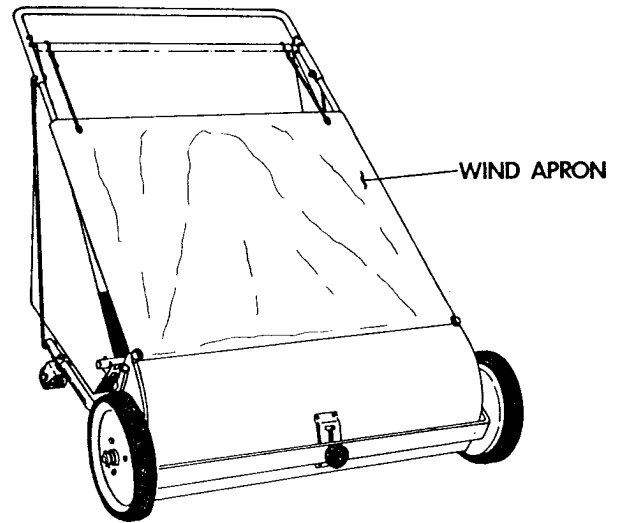
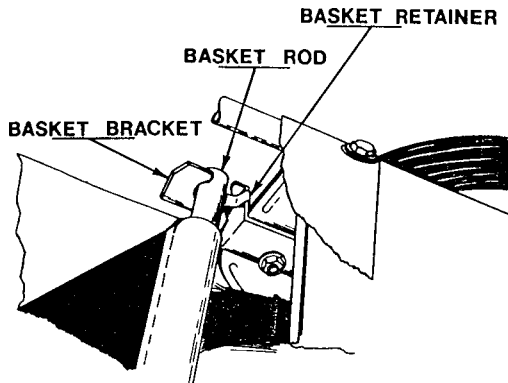


With Support Frame & Handle Assembly properly assembled, tighten all hardware.



# ASSEMBLY INSTRUCTIONS (Continued)

1. Unfold Basket (18).
2. Place Upper Wooden Basket Rods into Basket Supports (6) on Upper Handle Assembly (5).
3. Place Lower Wooden Basket Rods into Basket Brackets (8) & (9) until Basket Retainers (10) hold in place.
4. Unfold Wind Apron (17) and attach Hooks to the back of Basket (18).



## OPERATING INSTRUCTIONS

### READ SAFETY & OPERATING INSTRUCTIONS BEFORE OPERATING EQUIPMENT

1. The efficiency of this unit depends on the proper adjustment by loosening Adjusting Knob.
2. With Knob loosened slide Frame Assembly up, to lower Brushes, or down, to raise Brushes.
3. When unit is at desired height tighten Adjusting Knob.
4. When using Sweeper in grass make sure Brushes are just touching the top of the grass. If Brushes are adjusted too low it may cause Sweeper to flip over when using the Towing Package or when used manually.
5. To clean sidewalks or driveways lower the Sweeper until Brushes just touch the surface of pavement.

NOTE: If the Brushes do not rotate and the Wheels slide when Sweeper is being used, Brushes are set too low.

GENERAL NOTE: Avoid severe steep slopes that may cause Sweeper to turn over when being used.

### SWEEPING TIPS

1. Use Sweeper in early Spring to give your lawn a healthful cleaning.
2. Use Sweeper after mowing to remove turf clippings and give the lawn a blanket-like effect.
3. Sweep often in Fall as leaves are dropping. Do not wait until leaves are all off trees.
4. For best sweeping results keep lawn cut short. When sweeping turf clippings do not overload Basket. Turf clippings are heavy and overloading Basket will put unnecessary stress on Basket.
5. To reduce the number of loads required when picking up leaves, it may be easier to mow over the leaf area at your normal mowing height before using the Sweeper. The mowing will break up the leaves allowing them to compact when picked up with the Sweeper. This may reduce your leaf loads to approximately one quarter the number required when picking up whole leaves.

# MAINTENANCE INSTRUCTIONS

## CLEANING HOOD AND BASKET

1. Wet grass clippings have a tendency to dry and adhere to the inner face of the hood; it is important to keep this face clean for good sweeping action.
2. The basket should always be emptied immediately after each time the Sweeper is used.
3. If the grass or leaves being picked up are wet; wipe Basket out with soft cloth after dumping.
1. Keeping the Basket clean and dry will lengthen its service life.
2. Clean Hood and Basket with warm soapy water, wipe dry with clean soft cloth.

## BRUSH CARE AND REPLACEMENT

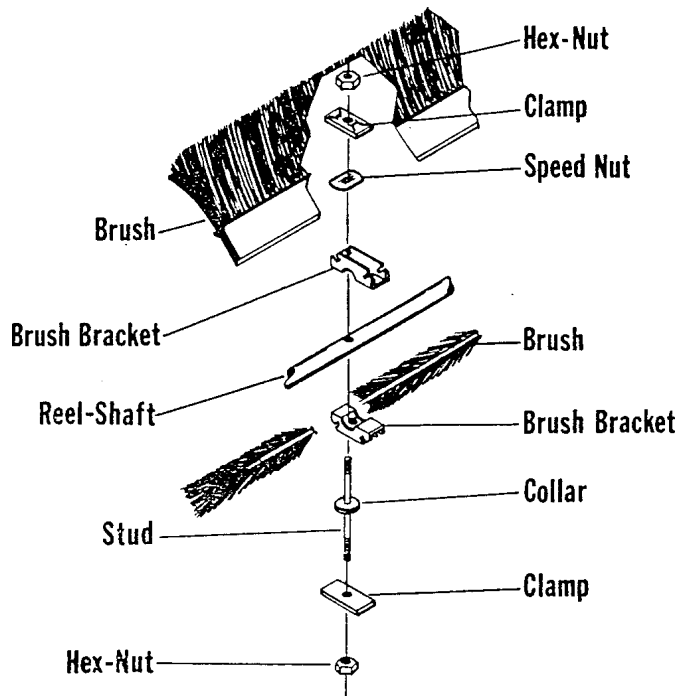
### Brush Removal

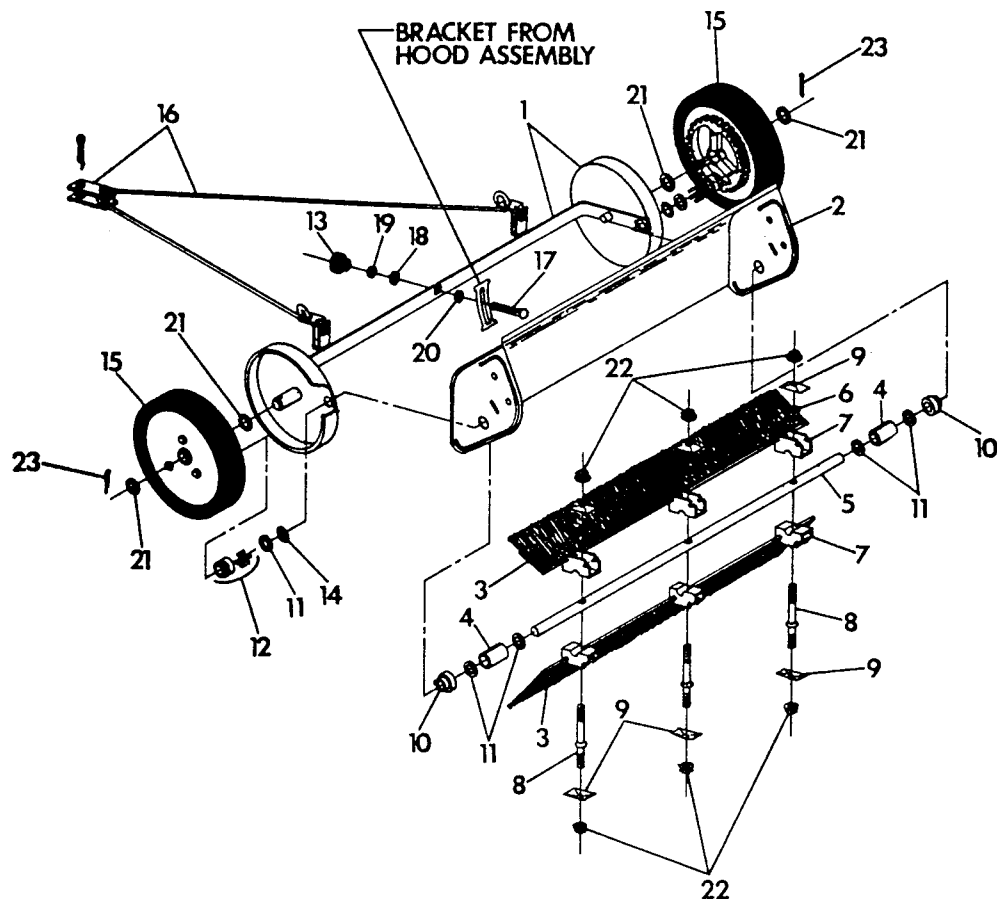
Should the bristles take a set from use, reverse the Brushes on the Reel Shaft. Never allow the Brush Bristles to remain in a bent position on any object for any length of time as they can become set in that position.

1. Turn the Sweeper upside down on a workbench or the ground.
2. Notice the Brush Stud has a collar fitting against one of the Brush Brackets holding it against the Reel Shaft.
3. Remove the Hex Nuts and Brush Clamps from the end of the Studs, on the sides with the collar.
4. Remove the Brushes from the Brush Bracket slots.
5. Remove the Hex Nuts and Brush Clamps from the opposite end of the Studs, but DO NOT remove the Speed Nut (this would allow the Stud to fall out of Reel Shaft releasing the Brush Brackets).

### To Replace Brushes

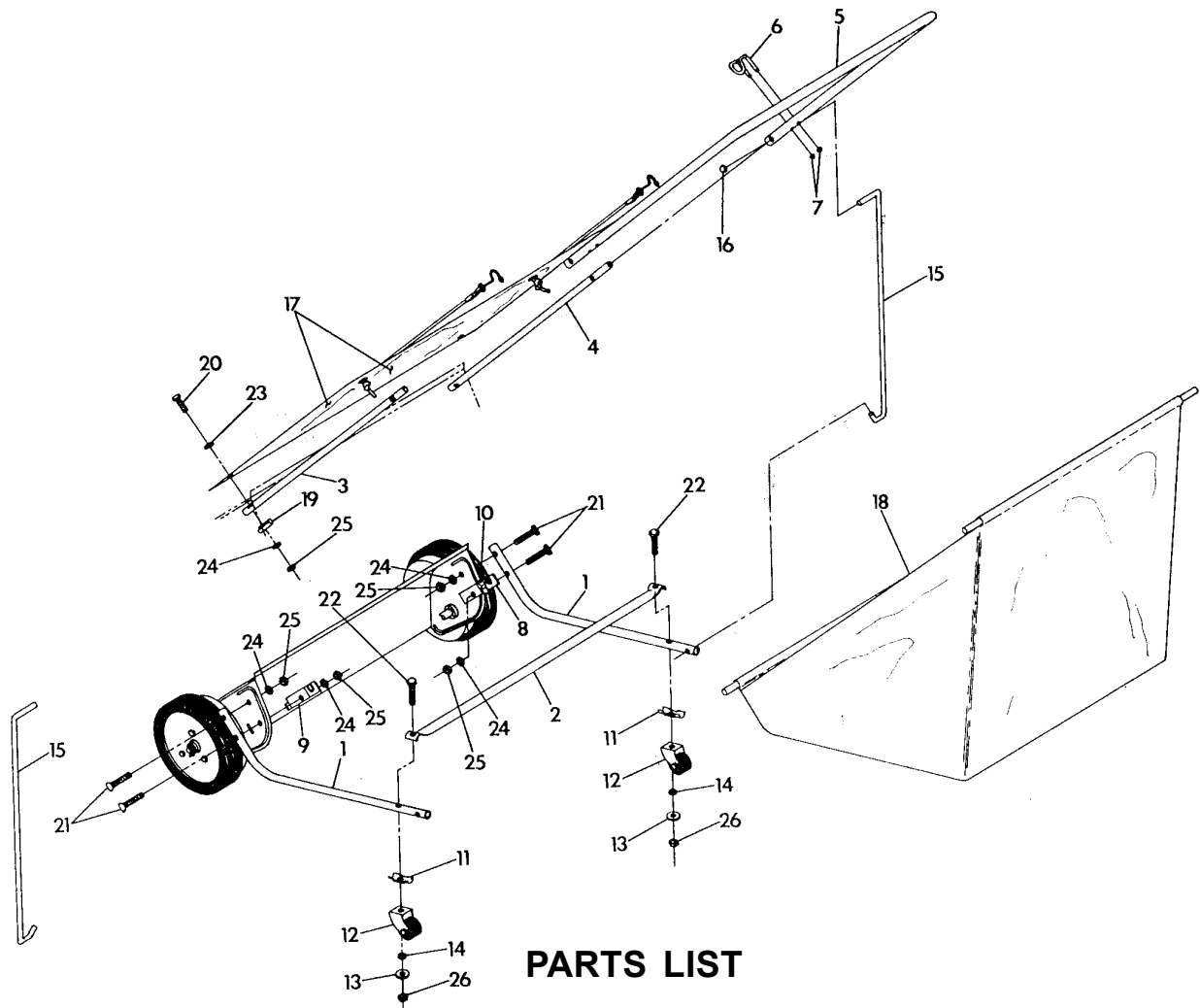
1. Turn the Reel Shaft to position the Brush Strips in the slots of the Brush Brackets that are held on the Stud by the Speed Nut.
2. Position the Brush Clamps and finger-tighten Hex Nuts. Be sure Brushes are all the way down in all the Brush Brackets.
3. Brushes will be staggered with a slight overlap. Tighten Lock Nuts to assure Brushes will be held firmly in place.
4. Turn the Reel Shaft so the installed Brush Strips are on the bottom.
5. Repeat the sequence of installation for the remaining four Brushes.
6. Tighten all Nuts, torque to 50 to 55 inch pounds.





## PARTS LIST

Item	Part No.	Qty.	Description
1	78-174-C	1	Frame Weldment
2	80-117-D	1	Hood Assembly SL-8430
3	1400-15-B	8	Brush Strip Assembly SL
4	78-17-A	2	Spacer Reel Shaft
5	78-32PLT	1	Reel Shaft ZP
6	75-89-A	3	Speed Nut
7	74-13-C	6	Bracket
8	74-16PLT	3	Plated Stud Zinc
9	69-04-A	6	Clamp Brush Strip
10	69-233-A	2	Bushing, Nylon SL
12	SA-1580-B	1	Pinion Kit
13	79-94-A	1	Fluted Knob
14	79-104-A	2	Retaining Ring
15	SA-1112-C	2	Wheel & Tire Assembly
17	70-516-16	1	Carriage Bolt
18	711506	1	WSR-Flat 5/16 ST PL
19	711545	1	WSR-Helical 5/16
20	946-816-16	1	Fiber Washer
21	946-121620	1	Fiber Washer
22	362-416	6	Nut-Hex Self-Locking
23	380-332-16	2	Cotter Pin



## PARTS LIST

Item	Part No.	Qty.	Description
1	82-208-B	1	Support Frame
2	82-205-B	1	Handle Cross Bar
3	82-206-C	1	Lower Handle
4	82-233-C	1	Lower Handle
5	SA-1119-C	1	Upper Handle Assembly
6	80-110-A	2	Basket Support
7	77-10-A	4	Push Nut Basket Support
8	62-99-RB	1	Bracket
9	62-100-LB	1	Bracket
10	83-206-A	2	Basket Retainer SL-8430
11	79-174-A	2	Block - Pivot Bearing
12	SA-706-B	2	Caster Assembly
13	82-138-B-1	2	Special Washer
14	74-126-A	2	Spacer
15	82-214-A	2	Brace-Wire
16	59-45-A	2	Retainer
17	82-240-B	1	Wind Apron Assembly
19	59-77-A	2	Clamp
20	713005	2	BLT-HH 1/4-20 x 1 1/2 #5
21	69-416-20	4	BLT-Cont HD 1/4-20 x 1.25
22	713030	2	BLT-HH 5/16-18 x 1 3/4 #5
23	711505	2	WSR-Flat 1/4
24	711544	6	WSR-Helical 1/4
25	711316	6	Nut-Hex 1/4-20 ST PL
26	711373	2	Nut-Nloc 1/4-20

# LIMITED WARRANTY

The Parker Sweeper Company warrants to the original purchaser/user that this product is free from defects in workmanship and materials under normal use and service for a period of two years from date of purchase. In addition, Parker Sweeper Company will, at its option, honor labor warranty claims for the first 12 months from date of sale, provided such claims are submitted through and approved by factory authorized repair stations. Parker Sweeper Company will, at its option, repair or replace without charge, except for transportation costs, parts that fail under normal use and service when operated and maintained in accordance with the applicable operation and instruction manuals.

This warranty does not apply to normal wear, or to items whose life is dependent on their use and care, such as belts, cords, switches, hoses, rubber parts, electrical motor components or adjustments. Parts not manufactured by Parker Sweeper Company such as engines, batteries, battery chargers, hydraulic pumps, and tires are covered by and subject to the warranties and/or guarantees of their manufacturers. Please contact Parker Sweeper Company for procedures in warranty claims against these manufacturers.

**Special warning to purchaser** — Use of replacement filters and/or prefilters not manufactured by Parker Sweeper Company or its designated licensees, will void all warranties expressed or implied.

A potential health hazard exists without exact original equipment replacement.

All warranted items become the sole property of Parker Sweeper Company or its original manufacturer, whichever the case may be.

Parker Sweeper Company disclaims any implied warranty, including the warranty of merchantability and the warranty of fitness for a particular purpose. Parker Sweeper Company assumes no responsibility for any special, incidental or consequential damages.

This limited warranty is applicable only in the U.S.A. and Canada, and is extended only to the original user/purchaser of this product. Customers outside the U.S.A. and Canada should contact their local distributor for export warranty policies. Parker Sweeper Company is not responsible for costs or repairs performed by persons other than those specifically authorized by Parker Sweeper Company. This warranty does not apply to damage from transportation, alterations by unauthorized persons, misuse or abuse of the equipment, use of non-compatible chemicals, or damage to property, or loss of income due to malfunctions of the product.

If a difficulty develops with this machine, you should contact the dealer from whom it was purchased.

This warranty gives you specific legal rights, and you may have other rights which vary from state to state. Some states do not allow the exclusion or limitation of special, incidental or consequential damages, or limitations on how long an implied warranty lasts, so the above exclusions and limitations may not apply to you.



*A Minuteman International Company*

**World Headquarters**

Minuteman International, Inc.  
111 South Rohlwing Road  
Addison, Illinois 60101

Minuteman Canada, Inc.  
2210 Drew Road  
Mississauga, Ontario  
L5S 1B1

(630) 627-6900  
FAX (630) 627-1130

(905) 673-3222  
FAX (905) 673-5161

988380  
Printed in U.S.A.