

# OWNER'S GUIDE



## Thatch-O-Matic

MODELS PR-8815-I/C



AF-801

**SAFETY COMES FIRST; READ THIS OWNER'S GUIDE THOROUGHLY, UNDERSTAND ALL INSTRUCTIONS BEFORE SETTING UP AND OPERATING THIS EQUIPMENT.**

**PARKER SWEEPER COMPANY**

Box 1728

Springfield, Ohio 45501-1728

Plate No. 1401

**87-53-A**

# TO THE OWNER

These instructions were written to assist you in the assembly and operation of your Power Rake. **READ THE INSTRUCTIONS** thoroughly **BEFORE** attempting to assemble and operate the machine so that you are familiar with the complete procedure and the safety precautions.

## RULES FOR SAFE OPERATION



The following safety precautions are suggested to prevent damage to the equipment or injury to the operator or nearby persons.

1. Do not allow anyone to operate this machine without proper instructions.
2. Do not permit children to operate this machine.
3. Do not try to remove any wire, twine, or weed roots that may become wrapped around the Reel while the Engine is running. To inspect or work on the Unit, **first disconnect the wire from the Spark Plug and ground it to the Clip provided on the Engine head.**
4. Keep all Nuts and Bolts tight to be sure the machine is in good working condition.
5. Do not start the Engine or operate this machine unless all guards are in place.
6. Before operating unit, the area to be worked should be thoroughly inspected, and all foreign objects — such as wire, bones, sticks, stones and other debris likely to damage the machine or cause personal injury, should be removed.
7. Follow the maintenance instructions as outlined in this manual.
8. Stop the Engine before attempting to make any adjustment or performing any maintenance work.
9. Do not run the Engine in an enclosed area. Exhaust gases contain carbon monoxide, an odorless and deadly poison.
10. Do not fill the Fuel Tank while the Engine is running. Spilling gasoline on a hot Engine may cause a fire or an explosion.
11. While machine is running, do not leave it unattended.
12. Avoid using the machine in dangerous places where steep slopes or loose debris will endanger the safety of the operator or other people.

## IMPORTANT

**ALWAYS GIVE THE FOLLOWING INFORMATION WHEN ORDERING REPAIR PARTS:**

- |                               |                        |
|-------------------------------|------------------------|
| 1. Part Number (Not Ref. No.) | 3. Description of Part |
| 2. Quantity Needed            | 4. Model No. of Unit   |

**If unable to obtain parts locally, write down above information and send to:  
PARKER SWEEPER CO., BOX 1728, SPRINGFIELD, OHIO 45501**

Your unit is right hand (R.H.) or left hand (L.H.) as you stand behind it.

# ASSEMBLY INSTRUCTIONS

**YOUR SAFETY IS OUR CONCERN. READ ALL SAFETY RULES AND OPERATING INSTRUCTIONS BEFORE ATTEMPTING TO OPERATE THIS EQUIPMENT. FAILURE TO FOLLOW SAFETY RULES AND OPERATING INSTRUCTIONS MAY RESULT IN SERIOUS INJURY.**

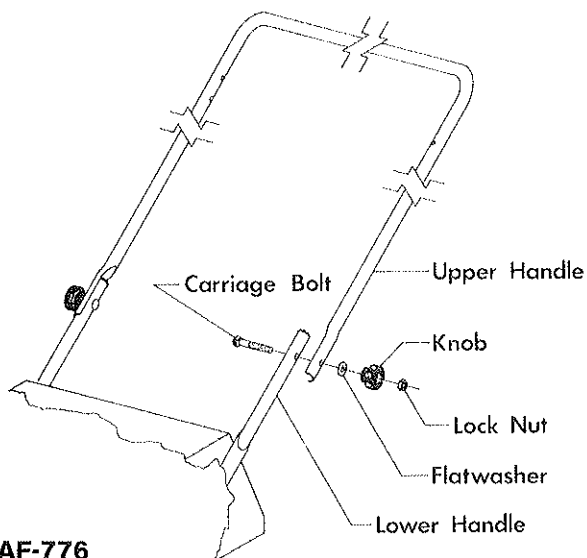
The Thatch-O-Matic is shipped complete in one box. Remove all items from the carton. DO NOT discard the carton or any inserts until the Unit is completely assembled. All hardware is on the unit in its proper location. If something is missing, please notify the dealer/distributor where unit was purchased. If unable to purchase parts locally, contact the Parker Sweeper Company.

The left or right hand side of the machine is determined when standing behind the unit in the operator's position. Make sure spark plug wire is disconnected before continuing these instructions.

## HANDLE ASSEMBLY

1. Remove Lock Nuts, Knobs and Flatwashers from Carriage Bolts assembled to Lower Handles.
2. Pull Carriage Bolts out until ends are flush with outside of Lower Handles.
3. Place ends of Upper Handle onto Lower Handles, with the two small holes on the Right Hand side of unit.
4. Align Holes in Handles.
5. Reinsert Bolts through holes and replace Flatwasher, Knob and Lock Nut.

NOTE: Lock Nut should be tightened only until flush with end of Bolt. This will allow Knob to be loosened, to fold Upper Handle down for storage, without losing the Knob.

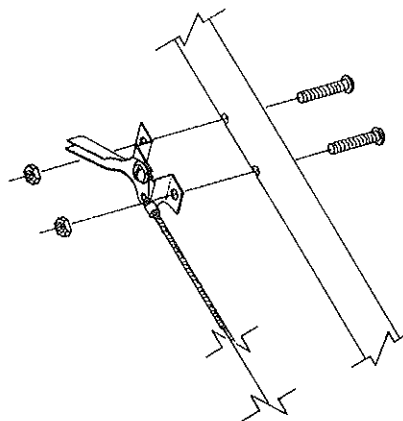


AF-776

## THROTTLE HOOKUP

1. Remove Throttle Control from its shipping position.
2. Straighten the Throttle Cable out and run it up the right hand side of Upper Handle.

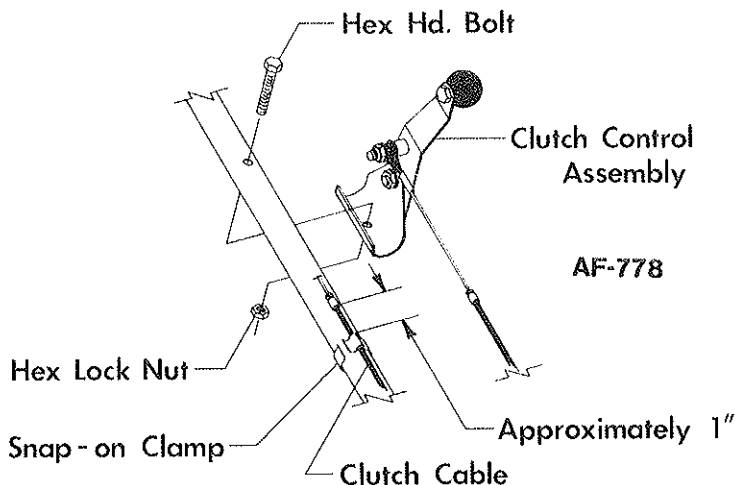
3. Attach the Throttle Control to the Upper Handle with the two Oval Hd. Screws and Hex Nuts furnished.
4. Place Clamp onto Handle to secure Throttle Cable.  
NOTE: Make sure no bends are less than 8" radius.



AF-777

## CLUTCH ASSEMBLY

1. Remove Clutch Control Assembly from its shipping position.
2. Remove Hex Hd. Bolt and Hex Lock Nut from curved Bracket of Assembly.
3. Straighten Cable and run Clutch Control Assembly up left hand side of Handles.
4. Place curved Bracket of Clutch Control Assembly onto Upper Handle and secure with hardware removed in step 2.
5. Attach Clamps to Handle to keep Cable secure. NOTE: Make sure no bends are less than 8" radius.



AF-778

**SAFETY IS IMPORTANT! DO NOT IGNORE IT!  
OBSERVE IT! BE SAFE!**

**OBSERVE SAFETY RULES AT ALL TIMES. DON'T TAKE CHANCES!**

# OPERATING INSTRUCTIONS

## READ SAFETY OPERATING INSTRUCTIONS BEFORE OPERATING EQUIPMENT

### TO START UNIT

**IMPORTANT:** Before starting the Engine, read the Engine Instructions Manual and add gasoline and oil as required.

1. Be sure that the Spark Plug Wire is attached to the Spark Plug and not grounded to the Engine.
2. Open the Throttle about halfway, close the choke and pull the Starter Rope.
3. After the Engine starts, open the choke or the Engine will stall.
4. Place Clutch in Up position to activate Reel.

### TO STOP ENGINE:

Place Throttle, and Choke in the close position (NOTE: Be sure Clutch Assembly is in the DOWN position before shutting off Engine).

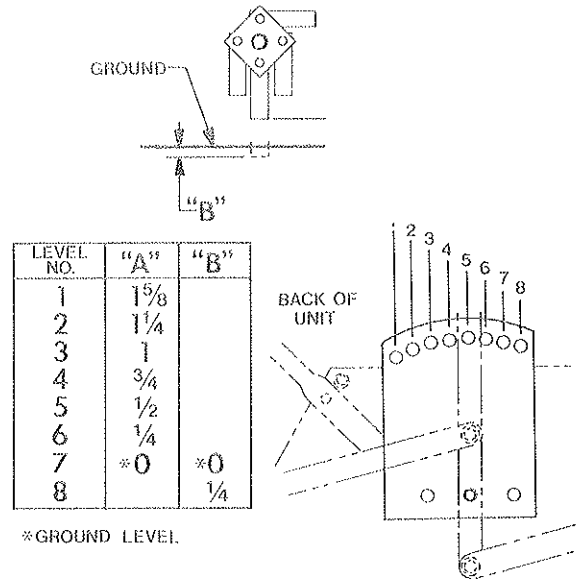
**WARNING:** Allow Engine to cool 2 or 3 minutes before refueling. Fuel spilled on a hot Engine could ignite, resulting in serious damage to the unit and possible injury to the operator.

### SERVICING AND OPERATING INSTRUCTIONS.

Refer to Engine Manufacturer's Service Manual. Careful attention to care of air cleaner and crankcase lubrication instructions will insure longer engine life. KEEP ENGINE CLEAN.

### FLAIL REEL HEIGHT ADJUSTMENT

1. For height adjustment move Latch Weldment up, and pull Lever Handle Weldment out of hole setting on Adjusting Bracket, to a hole setting of your choice.
2. This Unit is capable of providing 8 different height levels. See illustration and chart below for proper height adjustment.



## MAINTENANCE INSTRUCTIONS

1. Be sure to keep the oil at the proper level in the Engine. Check the oil level each time you fill the fuel tank.
2. Change oil after first five hours of operation. There after, change every 25 hours of operation.
3. The Engine may require minor carburetor adjustments to compensate for differences in fuel, temperature, altitude or load. See section titled ADJUSTMENTS in the engine manual.
4. Remember that the Engine is air cooled, and in order to operate efficiently, it should be kept clean. Dirt and debris should not be allowed to cover the Engine and clog the cooling fins.

5. The Reel Bearings and Idler Pulley Bearings are permanently lubricated and sealed. They require no further attention.

### LUBRICATION

1. A few drops of light oil on the Throttle Control, lever and cable, will keep it operating smoothly.
2. Refer to Engine operating manual for proper lubrication of the Engine.
3. Add a few drops of oil to Wheel Axles between Spacers and Wheels to keep Wheels properly lubricated.

## WARRANTY INFORMATION

Parker Sweeper Company warrants each new piece of equipment manufactured under its name except the Engine, to be free of defects in materials and workmanship under normal use and service. Parker Sweeper Company's obligation is limited to repair or replacement at its option for one (1) year (ninety (90) days for commercial service) from date of purchase.

If trouble should occur with the Engine, please contact the manufacturer, giving them all information: Name of Unit, purchased from company (Thatch-O-Matic PR-8815-1/C, Parker Sweeper Co., etc.); problem with engine, model number of engine, etc.; when unit was purchased; and a complete return address with zip code. Failure to provide complete information will result in unnecessary delay of repair and return of unit.

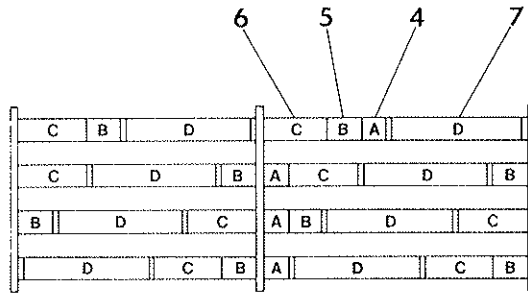
Proper assembly of replacement parts is the responsibility of the owner or mechanic doing the work. Parker Sweeper Company warranty only applies to the original purchased unit and/or replacement parts if assembled correctly by a qualified mechanic. Under no circumstances does the warranty extend beyond the original time specified from date of purchase.

### ENGINE:

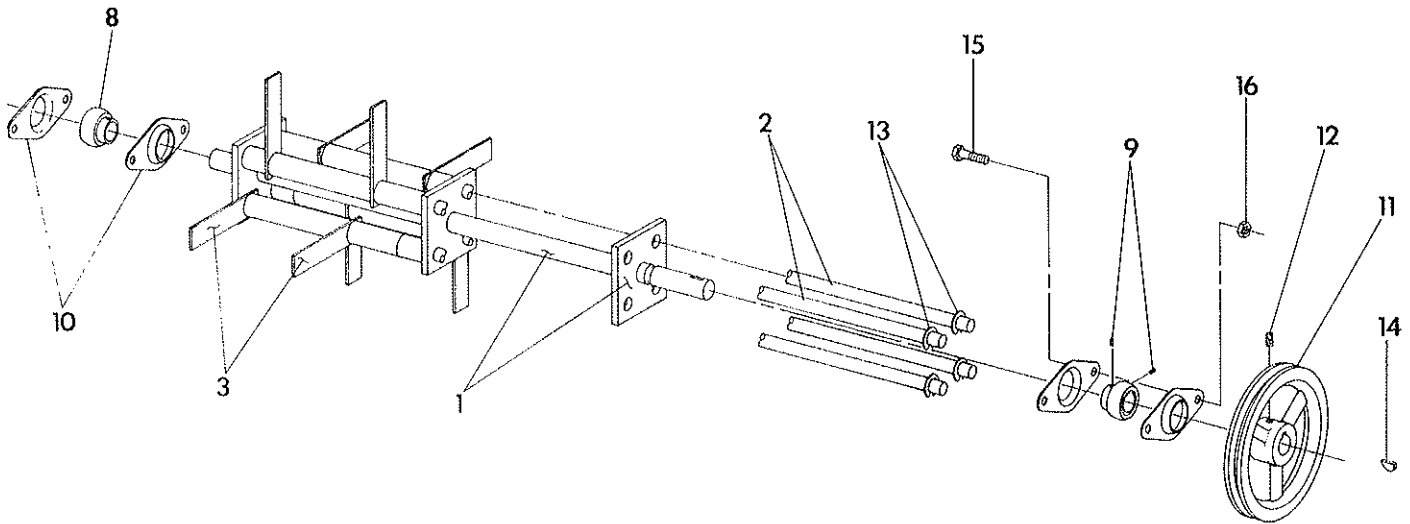
Briggs & Stratton Company  
P.O. Box 702  
Milwaukee, Wisconsin 53201

# FLAIL REEL ASSEMBLY

*SA-1268-D*  
*128.00*  
*Retail*  
*3-9-94*



AF-774



*SA*

## PARTS LIST

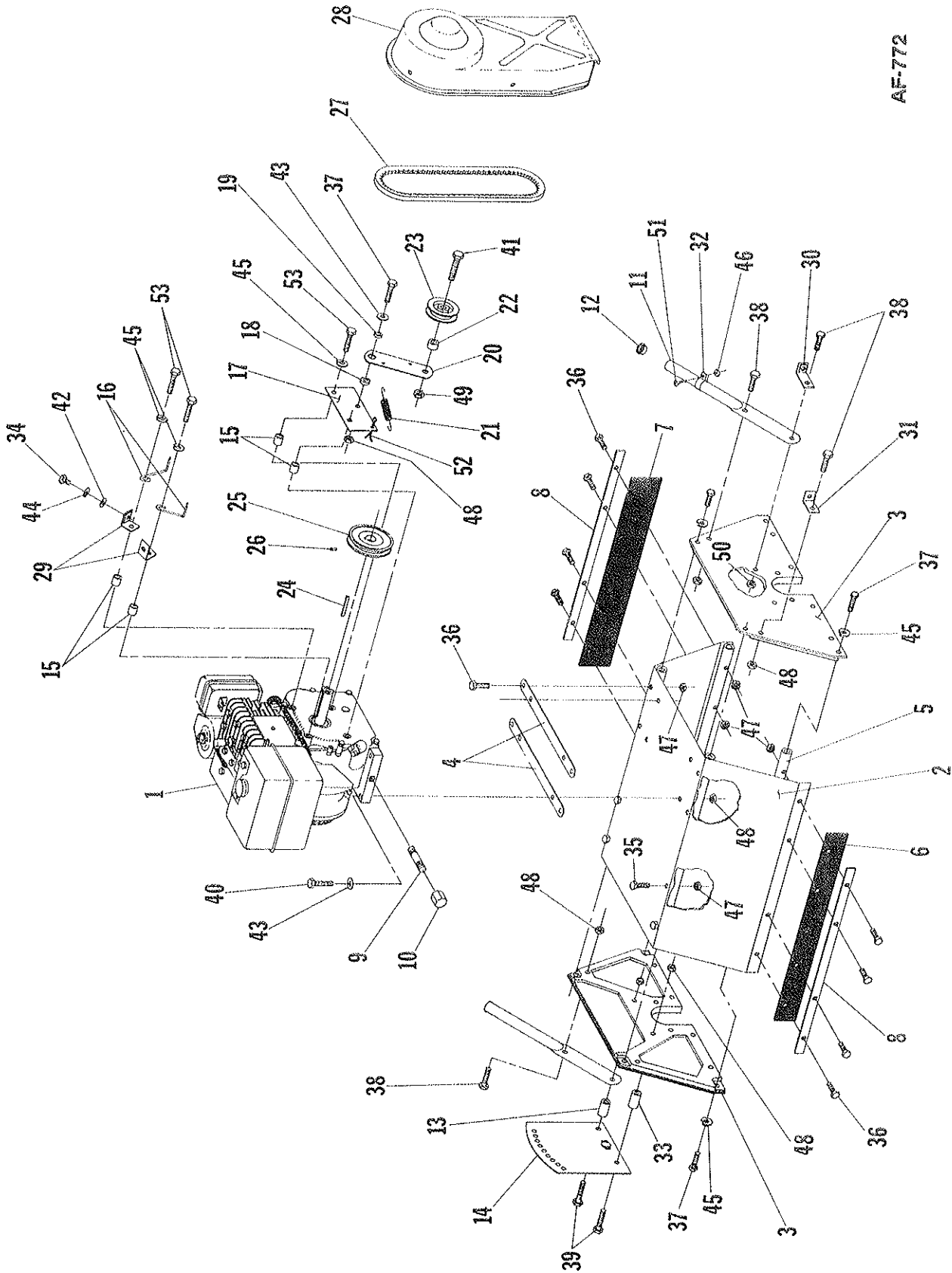
Ref. Part No. No.	Qty. Per Unit	Description	Ref. Part No. No.	Qty. Per Unit	Description
1 84-13-B	1	Flail Reel Weldment	10 66-139-A	4	Bearing Flange, Sealmaster
2 84-31-B	4	Rod, Flail Reel	11 76-377-B	1	Sheave
3 66-56-A	16	Thatching Blade	12 **	1	Set Screw 5/16-18 x 3/8, Allen Hd.
4 84-34-A	4	Spacer 5/8 Lg.	13 997-8	8	Retaining Ring
5 84-36-A	8	Spacer 15/16 Lg.	14 280-09	1	Retaining Ring
6 84-33-A	8	Spacer 1 15/16 Lg.	15 65-516-16	4	Bolt, Hex Hd. 5/16-18 x 1
7 84-32-A	8	Spacer 3 3/4 Lg.	16 365-516	4	Nut, Hex Lock 5/16-18
8 66-138-A	2	Bearing, Sealmaster			
9 *	4	Set Screw 1/4-28 x 1/4, Allen Hd.			

\* Supplied with item 8

\*\* Supplied with item 11

# ENGINE & DRIVE ASSEMBLY

AF-772



**HANDLE & WHEEL ASSEMBLY****PARTS LIST**

Per. No.	Part No.	Qty. Per Unit	Description
1	85-104-B	1	Lever Handle Weldment
2	85-99-B	1	Latch Weldment
3	85-100-A	1	Handle Grip
4	85-102-B	2	Linkage
5	86-86-A	1	Spacer
6	85-117-A	1	Spacer
7	85-105-A	1	Belleville Spring Washer
8	85-116-A	2	Spacer
9	85-123-C	1	Front Axle
10	85-124-C	1	Rear Axle
11	73-414-A	4	Spacer
12	83-193-A	4	Spacer
13	85-118-A	2	Spacer
14	85-139-B	2	Side Guard
15	79-16-A	4	Spacer
16	70-69-A	4	Wheel
17	46-81-A	4	Special Washer
18	76-254-A	4	End Cap
19	83-213-C	1	Upper Handle
20	81-94-A	2	Carriage Bolt 5/16-18 x 2 3/4
21	79-94-A	2	Plastic Knob
22	83-25-B-44	1	Throttle Control Assembly
23	87-244-A	1	Bracket
24	70-67-B	1	Clutch Control Lever
25	81-42-A	1	Spacer
26	68-28-A	1	Cupped Spring Washer
27	83-35-A	1	Spacer
28	87-241-A	1	Clutch Cable Assembly
29	55-130-A	1	Ball Knob

Items listed below should be purchased through a local hardware store, except item 48.

30	65-416-16	4	Bolt, Hex Hd. 1/4-20 x 1
31	65-516-10	1	Bolt, Hex Hd. 5/16-18 x 5/8
32	65-516-12	1	Bolt, Hex Hd. 5/16-18 x 3/4
33	65-516-16	2	Bolt, Hex Hd. 5/16-18 x 1
34	65-516-24	2	Bolt, Hex Hd. 5/16-18 x 1 1/2
35	65-616-36	4	Bolt, Hex Hd. 3/8-16 x 2 1/4
36	945-416	4	Flatwasher, Plain 1/4
37	945-516	11	Flatwasher, Plain 5/16
38	945-616	8	Flatwasher, Plain 3/8
39	945-816	2	Flatwasher, Plain 1/2
40	960-516	2	Flatwasher, Plain (Wide) 5/16
41	935-516	1	Lockwasher, Spring 5/16
42	365-10	2	Nut, Hex Lock #10-24
43	365-516	4	Nut, Hex Lock 5/16-18
44	364-416	4	Nut, Hex Lock (Thin) 1/4-20
45	364-516	5	Nut, Hex Lock (Thin) 5/16-18
46	364-616	5	Nut, Hex Lock (Thin) 3/8-16
47	515-10-20	2	Screw, Rd. Hd. Mach. #10-24 x 1 1/4
48	80-276-A	3	Snap-on Clamp



## ENGINE & DRIVE ASSEMBLY

### PARTS LIST

Per. No.	Part No.	Qty. Per Unit	Description
1	*	1	Engine, B&S 3.0 H.P.
2	87-237-D	1	Cover Replacement
3	85-06-D	2	Side Plate
4	85-130-B	2	Engine Support
5	84-39-B	4	Brace & Insert Assembly
6	85-126-B	1	Front Drag Strip
7	85-127-B	1	Rear Drag Strip
8	85-125-A	2	Retainer Strip
9	85-28-A	1	Pipe Nipple 1/4 x 1 1/2
10	85-29-A	1	Cap 1/4
11	83-217-C	2	Lower Handle
12	80-267-A	2	Tube Cap
13	88-79-A	1	Spacer
14	85-103-C	1	Adjusting Bracket Weldment
15	83-35-A	4	Spacer
16	70-71-A	2	Belt Popper
17	87-236-B	1	Mounting Plate
18	81-120-A	1	Spacer
19	82-135-A	1	Spacer
20	87-238-A	1	Clutch Plate
21	77-19-A	1	Clutch Spring
22	87-239-A	1	Spacer
23	76-456-A	1	Idler
24	68-137-A	1	Engine Key
25	76-374-B	1	Sheave
26	* *	1	Set Screw 5/16-18 x 1/4
*** 27	77-01-A	1	Belt
28	87-66-D	1	Belt Guard
29	88-41-A	2	Bracket Weldment
30	88-42-A	1	Bracket Weldment
31	88-43-A	1	Bracket Weldment
32	86-59-B	1	Clamp
33	85-118-A	1	Spacer

Items listed below should be purchased through a local hardware store.

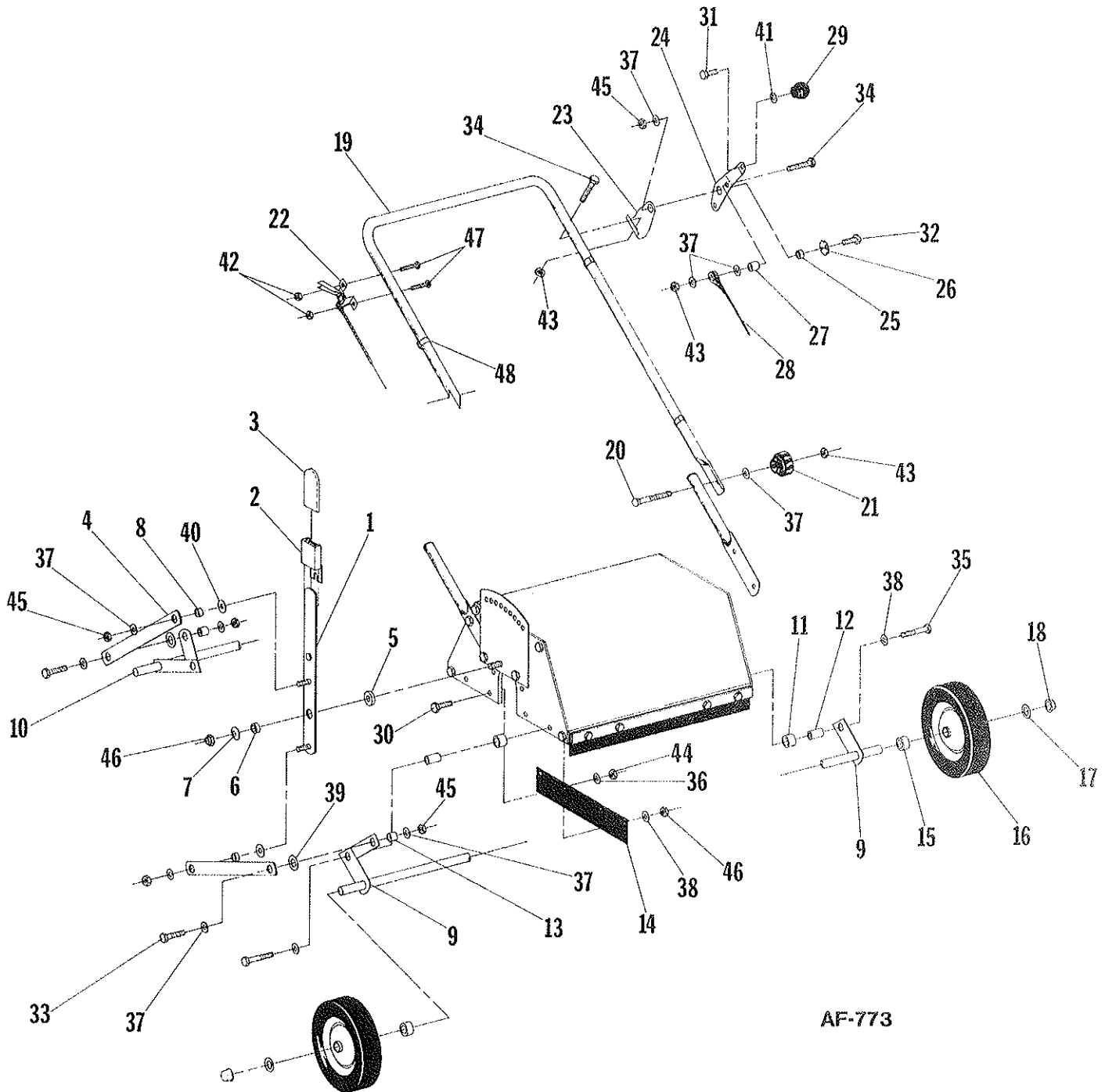
34	65-416-8	4	Bolt, Hex Hd. 1/4-20 x 1/2
35	65-416-20	4	Bolt, Hex Hd. 1/4-20 x 1 1/4
36	65-416-24	12	Bolt, Hex Hd. 1/4-20 x 1 1/2
37	65-516-16	9	Bolt, Hex Hd. 5/16-18 x 1
38	65-516-20	4	Bolt, Hex Hd. 5/16-18 x 1 1/4
39	65-516-24	2	Bolt, Hex Hd. 5/16-18 x 1 1/2
40	65-516-28	4	Bolt, Hex Hd. 5/16-18 x 1 3/4
41	65-616-28	1	Bolt, Hex Hd. 3/8-16 x 1 3/4
42	945-416	4	Flatwasher, Plain 1/4
43	945-516	5	Flatwasher, Plain 5/16
44	935-416	4	Lockwasher, Spring 1/4
45	935-516	12	Lockwasher, Spring 5/16
46	365-8	1	Nut, Hex Lock #8-32
47	365-416	16	Nut, Hex Lock 1/4-20
48	365-516	10	Nut, Hex Lock 5/16-18
49	365-616	1	Nut, Hex Lock 3/8-16
50	364-516	1	Nut, Hex Lock (Thin) 5/16-18
51	515-8-10	1	Screw, Rd. Hd. Mach. #8-32 x 5/8
52	380-432-12	1	Cotter Pin 1/8 x 3/4
53	60-516-20	4	Bolt, Hex Hd. 5/16-24 x 1 1/4

\* B&S Model Number, 082332 Spec. 8023-32

\*\* Supplied with item 25

\*\*\* Gates Vee-Belt #A35 NO SUBSTITUTES

# HANDLE & WHEEL ASSEMBLY



AF-773