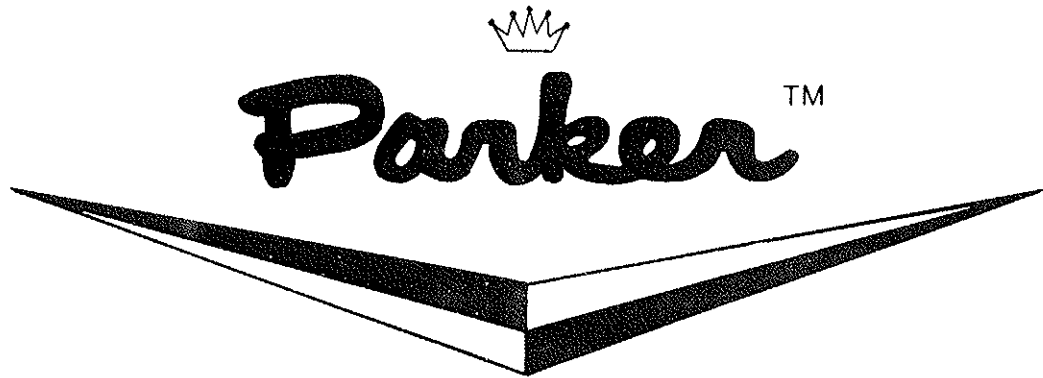


OWNER'S GUIDE



SV-8330-I/C SCAVENGER®

30" VACUUM SWEEPER



AF-473

**READ THESE INSTRUCTIONS
BEFORE SETTING UP AND OPERATING MACHINE**

**BE SAFE. PROTECT YOUR FAMILY, YOUR FRIENDS, YOURSELF.
OBSERVE ALL SAFETY INSTRUCTIONS.**

PARKER SWEEPER COMPANY Box 1728 Springfield, Ohio 45501-1728

TO THE OWNER

These instructions were written to assist you in the assembly and operation of your Scavenger. **READ THE INSTRUCTIONS** thoroughly **BEFORE** attempting to assemble and operate the machine so that you are familiar with the complete procedure and the safety precautions.

RULES FOR SAFE OPERATION



The following safety precautions are suggested to prevent damage to the equipment or injury to the operator or nearby persons.

1. Do not allow anyone to operate the Scavenger without proper instructions.
2. Do not permit children to operate the Scavenger.
3. Do not sweep too close to fire. Ingesting hot ashes will ignite the bag.
4. Stop the engine before reaching into the intake nozzle or discharge chute to dislodge sticks or other debris.
5. Stop the Engine before attempting to make any adjustment or performing any maintenance work on the Scavenger.
6. When working on the engine, always remove the spark plug wire from the engine and attach it to the V shaped clip on the engine head.
7. Do not run the engine in an enclosed area. Exhaust gases contain carbon monoxide, an odorless and deadly poison.
8. Do not fill the fuel tank while the engine is running. Spilling gasoline on a hot engine may cause a fire or an explosion.
9. While machine is running, do not leave it unattended.
10. Before using the machine to pick up debris, police the area to be cleaned first, picking up any large objects such as cans, toys, dog bones and chunks of wood. If these pass through the machine, they could damage the impeller, bend the engine crankshaft or put a hole in the bag.
11. Avoid using the machine in dangerous places where steep slopes or loose debris will endanger the safety of the operator or other people.
12. Keep all nuts, bolts and screws tight to be sure the Scavenger is in safe working condition.
13. Follow the maintenance instructions as outlined in this manual.
14. Do not start or run engine unless bag is properly secured as injury may result.

IMPORTANT

ALWAYS GIVE THE FOLLOWING INFORMATION WHEN ORDERING REPAIR PARTS:

- | | |
|-------------------------------|---------------------------|
| 1. Part Number (Not Ref. No.) | 3. Description of Part |
| 2. Quantity Needed | 4. Model No. of Scavenger |

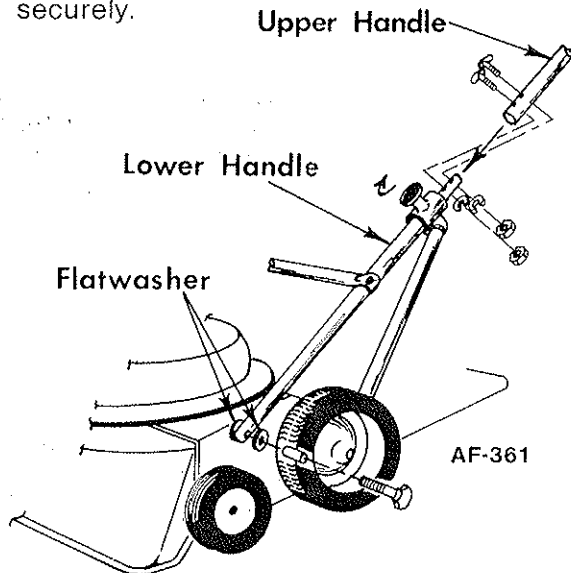
If unable to obtain parts locally, write down above information and send to:
PARKER SWEEPER CO., BOX 1728, SPRINGFIELD, OHIO 45501

Your unit is right hand (R.H.) or left hand (L.H.) as you stand behind it.

ASSEMBLY INSTRUCTIONS

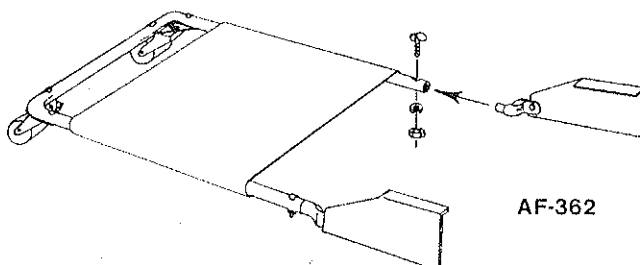
ATTACHING HANDLES

1. Lower Handle has to be attached to the side of the unit at side plate in between the two wheels.
2. Remove the Hex. Lock Nut from the bolt on the end of lower handle and insert the bolt into the hole in the side plate with the handle and flatwasher against the side.
3. Add the Hex. Lock Nut back and tighten. Repeat for opposite side.
4. To attach the upper handles to the lower handles, remove contour head bolts, lockwashers and hex nuts.
5. Slide the ends of the upper handles down over the ends of the lower handles.
6. Re-insert the contour head bolts into the handles and screw on the lockwasher and hex nut.
7. NOTE: Be sure torque knobs are tightened securely.



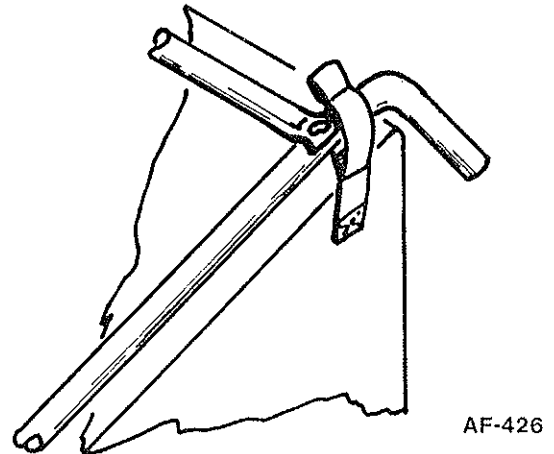
ATTACHING BAG PLATFORM

1. Remove the contour Hd. bolt, lockwasher and hex. nut from the open end of the bag platform on each side.
 2. Insert the ends of the bag platform onto the ends of the end caps as shown.
 3. Insert the contour bolt thru tubing and end cap and secure with lockwasher and hex. nut.
- NOTE: Your bag platform was made to support the bag and keep it from dragging the floor, do not use it to carry any other object because damage may occur.

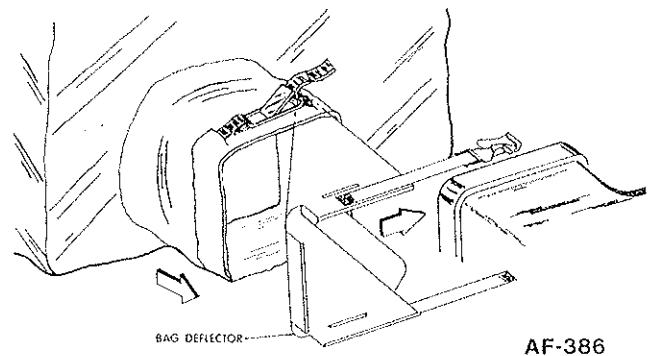


ATTACHING DUST BAG

1. Attach the dust bag to the sweeper by placing the loops over the handles.
2. Bag hooks are not necessary on new manual Scavengers with Bag Platform. The Bag Platform will help support the bag. If your unit is used for any reason without the Bag Platform, then bag hooks should be used on the lower straps and lower crossbar.
3. To prevent loss of the bag hooks, be sure that the end of the hooks are closed after attaching to the bag straps. This can be done by a light blow with a hammer or by squeezing the pliers.



Slide the bag deflector over the discharge chute, as shown. Engage the strap into the buckle and tighten to retain bag deflector. Slip the neck of the bag over the bag deflector and discharge housing until the tightening strap passes over the bag deflector to rest on the discharge housing. Pull the strap tight to secure the bag to the unit.



NOTE: Unit can be used as a blower by removing bag and reversing deflector.

OBSERVE SAFETY RULES AT ALL TIMES. DON'T TAKE CHANCES!

OPERATING INSTRUCTIONS

YOUR SAFETY IS OUR CONCERN. READ ALL SAFETY RULES AND OPERATING INSTRUCTIONS BEFORE ATTEMPTING TO OPERATE THIS EQUIPMENT. FAILURE TO FOLLOW SAFETY RULES AND OPERATING INSTRUCTIONS MAY RESULT IN SERIOUS INJURY.

CAUTION: The engine contains NO OIL. Read the engine instruction manual carefully before operating. Be sure you know how to start and stop engine.

1. Add proper amount of gasoline and oil to engine.
CAUTION: The unit should be level when adding fuel. Never add fuel when engine is hot! Adding fuel to a hot engine could cause a fire and/or explosion.

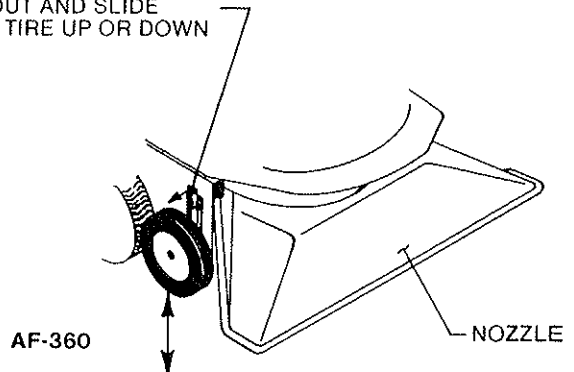
2. To start engine, move speed control lever to the "CHOKE" or "START" position. Grasp starter grip and pull cord rapidly to overcome compression and prevent kickback. When engine starts, move speed control lever to "RUN" or "FAST" position. **CAUTION:** Make sure speed control lever is all the way off "CHOKE" position. Running engine with control lever in partial choke position may cause excessive speeds. This could damage the engine and the unit, causing personal injury to the operator.

3. To stop the engine, move the throttle control lever to stop position. The engine has a built-in stop switch.

4. For maximum vacuum, operate unit with control lever in fastest running position. Vacuum should be set by type of materials you are picking up with unit.

5. The nozzle height should also be set according to operating conditions. For best results on a hard paved surface the nozzle should be about 1/2" above surface. For picking up lawn debris, the nozzle should be about 1" above the top of the grass.

TO ADJUST NOZZLE
PULL OUT AND SLIDE
FRONT TIRE UP OR DOWN



6. The height of the intake nozzle can be adjusted by the two smaller front wheels. Pull the spring lever away from the backplate; this will enable you to move the wheels up or down. To raise the nozzle, lower the wheels in the backplate. To lower the nozzle, raise the wheels in the backplate.

NOTE: Be sure that the wheels are locked into position and level.

7. If vacuum seems to decrease during operation, stop and check dust bag. If dirty, see instructions on how to clean bag in the MAINTENANCE INSTRUCTIONS.

8. There is a Hose Kit available as an optional accessory for vacuuming in close areas, such as shrubs, bushes, or flower beds. It can be purchased by ordering: MA-482-C SCAVENGER HOSE KIT.

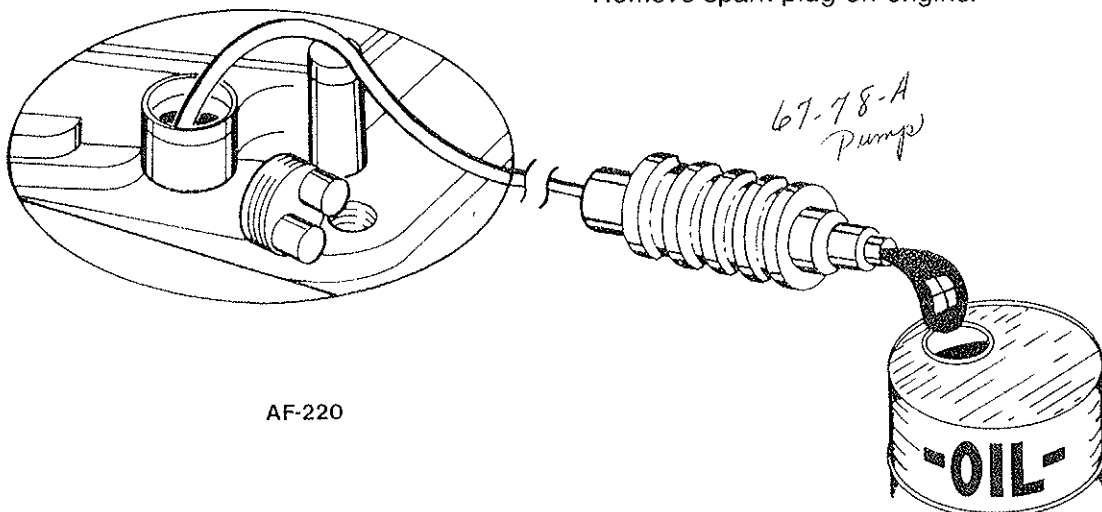
CAUTION

FAILURE TO USE ONLY PARKER ORIGINAL EQUIPMENT REPLACEMENT BAGS AND/OR PARTS WILL RESULT IN THE TERMINATION OF THE WARRANTY ON THIS UNIT! GENUINE PARKER BAGS ARE ALWAYS IDENTIFIED BY THE PARKER LOGO.

MAINTENANCE INSTRUCTIONS

1. Be sure to keep the oil at the proper level in the engine. Check the oil level each time you fill the fuel tank.
2. Change oil after first five hours of operation. Thereafter, change every 25 hours of operation.
3. To drain the crankcase oil from the engine, we have provided a siphon pump. To use it, run the engine for a short time to warm the oil and make it flow more easily. Then remove the cap from the filler hole in the engine and insert the plastic tube into the hole. Hold the pump below the bottom of the crankcase and squeeze it several times until oil appears in the tube above the pump, and allow the oil to siphon into a container for disposal.
DISPOSE OF PROPERLY.
4. The Briggs & Stratton engine on this unit uses a dual element air cleaner. Clean and re-oil foam pre-cleaner at three month intervals or every 25 hours of operation, whichever occurs first. Service more often under dusty conditions. Yearly or every 100 hours, whichever occurs first, remove paper cartridge. Clean by tapping gently on flat surface. If very dirty or damaged, replace cartridge. Consult Briggs & Stratton Engine Manual for further cleaning instructions.
5. The engine may require minor carburetor adjustments to compensate for differences in fuel, temperature, altitude or load. See section titled ADJUSTMENTS in the engine manual.
6. Keep the dust bag clean and dry. Clean the bag thoroughly after each use. A dirty bag will reduce the efficiency of the machine.
7. To clean the Dust Bag, turn the bag inside out and reattach to the sweeper. Start the engine and run at full throttle. Lightly tap the bag to release the dust trapped in the weave. When the bag is clean, remove it and turn it right side out again. Reattach to the sweeper and resume sweeping. DO NOT wash the Dust Bag to clean. Washing will shrink the material, reducing air flow through the bag and seriously reduce vacuum.
8. Before each use, check the wheels for dirt or grass that might be clogging the spacers or sleeves, preventing the wheels from turning freely. Once wheels are free of any clogs, oil the axles and sleeves. Also oil the casters on the bag platform. If the casters are not permitted to roll freely they could cause damage if used in grassy areas.

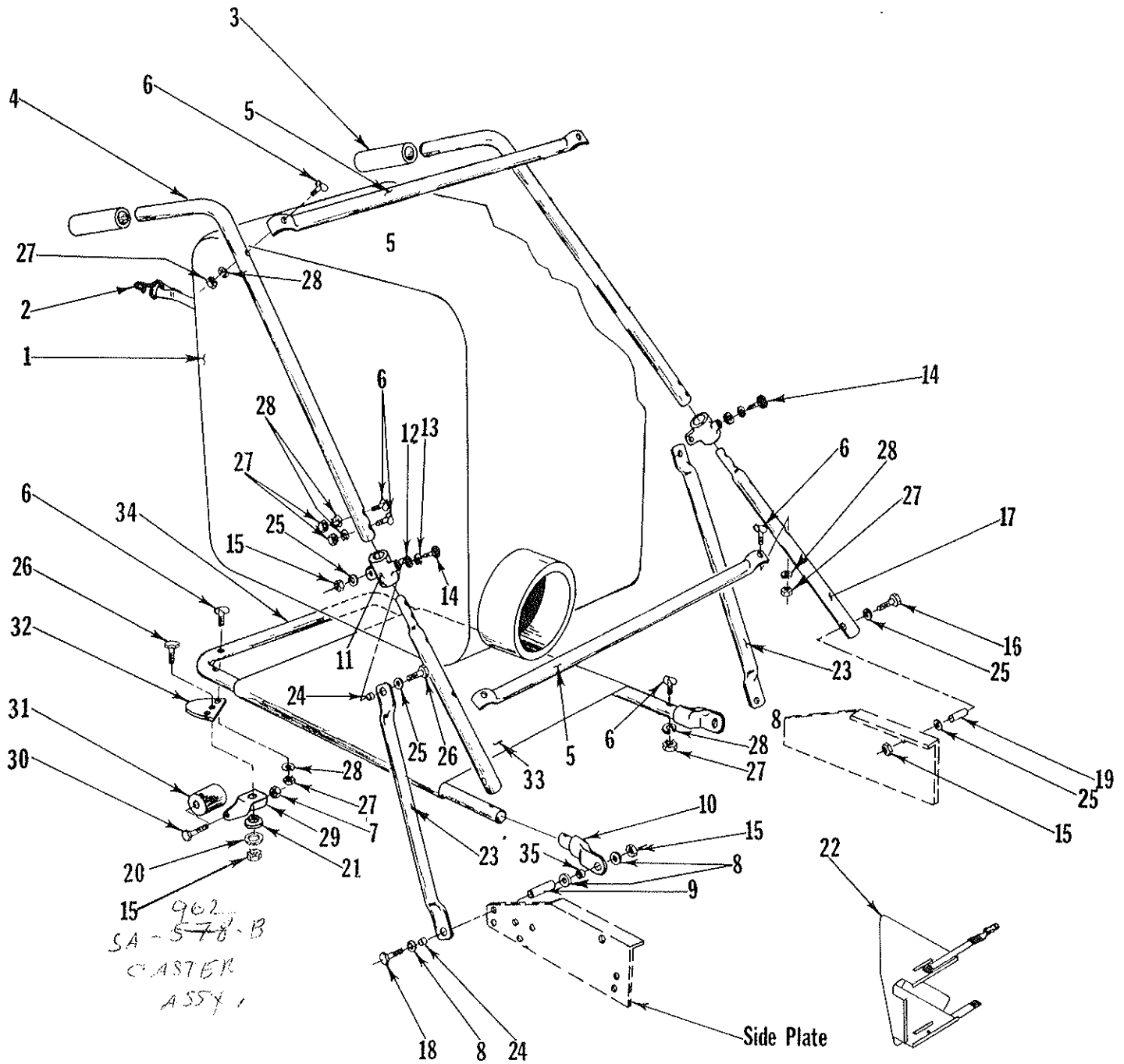
The efficiency of this unit depends on the breathing capacity of the Dust Bag. Under extremely dusty conditions the bag should be emptied and cleaned frequently. Always empty and clean bag before storing after use. Debris allowed to remain in the bag may cause spontaneous combustion, resulting in an explosion or fire.



AF-220

**SAFETY IS IMPORTANT! DO NOT IGNORE IT!
OBSERVE IT! BE SAFE!**

HANDLE AND BAG ASSEMBLY



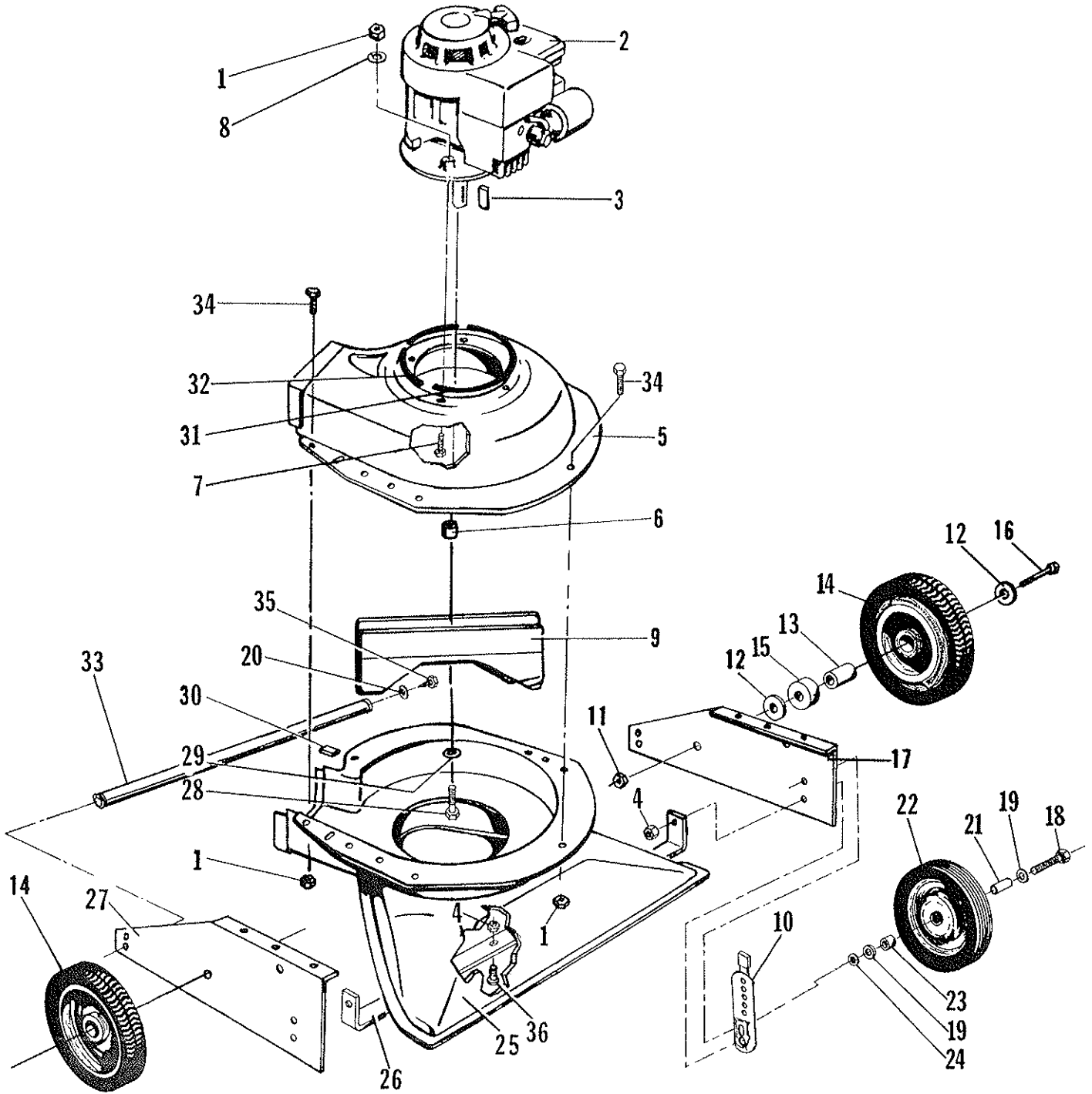
AF-474

HANDLE AND BAG ASSEMBLY

PARTS LIST

Ref. No.	Part No.	Qty. Per Unit	Description
1	MA-426	1	Dust Bag Assembly
2	63-304-A	4	Bag Hook (supplied with MA-426)
3	80-232-A	2	Handle Grip, Red
4	80-321-C	2	Upper Handle
5	81-157-B	2	Cross Bar Upper
6	69-416-24	14	Bolt, Contour Hd. 1/4-20x1 1/2
7	365-416	2	Nut, Hex. Lock 1/4-20
8	76-36-A	6	Special Washer
9	82-31-A	2	Spacer
10	81-116-A	2	Tubing End Cap
11	80-246-B	2	Pivot Bracket
12	936-616	2	Lockwasher, Int. Tooth 3/8
13	935-616	2	Lockwasher, Spring 3/8
14	80-228-A	2	Knurled Torque Knob
15	365-516	8	Nut, Hex. Lock 5/16-18
16	65-516-28	2	Bolt, Hex. Hd. 5/16-18x1 3/4
17	81-60-B	2	Middle Handle
18	65-516-36	2	Bolt, Hex. Hd. 5/16-18x2 1/4
19	80-238-A	2	Handle Inserts
20	50-230-A	2	Special Washer
21	78-130-A	2	Caster Bearing
22	82-194-C	1	Deflector Assembly
23	80-187-C	2	Truss Brace
24	54-227-A	4	Spacer
25	945-516	8	Flatwasher 5/16
26	65-516-16	4	Bolt, Hex. Hd. 5/16-18x1
27	335-416	14	Nut, Hex. Plain 1/4-20
28	935-416	14	Lockwasher 1/4
29	76-136-B	2	Caster Fork
30	76-202-A	2	Axle
31	81-79-A	2	Roller
32	82-02-B	2	Caster Plate
33	81-117-C	1	Bag Platform
34	81-96-C	1	Frame, Bag Platform
35	81-120-A	2	Spacer

CHASSIS ASSEMBLY



AF-356

CHASSIS ASSEMBLY

PARTS LIST

Ref. No.	Part No.	Qty. Per Unit	Description
1	365-516	15	Nut, Hex. Lock 5/16-18
2	84-12-D	1	Engine, B & S, I/C
3	63-130-A	1	Key, Engine
4	365-616	5	Nut, Hex. Lock 3/8-16
5	82-04-C <i>-R</i>	1	Upper Housing
6	84-40-A	1	Spacer
7	65-516-20	3	Bolt, Hex. Hd. 5/16-18x1 1/4
8	945-516	3	Flatwasher, Plain 5/16
9	SA-1268-B SA-1392-C	1	Impeller Assembly
10	81-129-B	2	Wheel Adjuster
11	363-816	2	Nut, Hex. Lock 1/2-20
12	58-05-A	4	Flatwasher 1/2
13	58-06-A	2	Sleeve
14	SA-1036-C	2	Wheel & Tire Assembly
15	76-325-A	2	Spacer
16	60-816-52	2	Bolt, Hex. Hd. 1/2-20x3 1/4
17	81-115-A <i>-R</i>	1	Side Plate, L.H.
18	65-616-44	2	Bolt, Hex. Hd. 3/8-16x2 3/4
19	945-616	4	Flatwasher 3/8
20	935-516	2	Lockwasher, Spring 5/16
21	70-85-A	2	Spacer Bushing
22	70-69-A	2	Front Wheel
23	79-139-A	2	Blower Spacer
24	936-616	2	Lockwasher, Int. Tooth 3/8
25	84-242-D	1	Housing Assembly
26	82-11-C <i>-R</i>	1	Support, Side Plate
27	81-114-A <i>-R</i>	1	Side Plate, R.H.
*28	60-616-28	1	Bolt, Hex. Hd. 3/8-24x1 3/4
29	935-616	1	Lockwasher Spring 3/8
30	64-178-A-1	1	Rub-R-Shim 1"
31	64-178-A-9.5	1	Rub-R-Shim 9 1/2"
32	64-178-A-6	2	Rub-R-Shim 6"
33	SA-984-A	1	Cross Brace Assembly
34	65-516-12	11	Bolt, Hex. Hd. 5/16-18x3/4
35	76-269-A	2	Lag Bolt 5/16x1
36	65-616-12	1	Bolt, Hex. Hd. 3/8-16x3/4

*Torque to 29-33 Ft. lbs.

Order all parts from your nearest PARKER PARTS DISTRIBUTORS. If unable to locate the part from your Parts Distributor, forward your order to PARKER SWEEPER COMPANY for a quote.

Hart-Greer, Inc.
900 N. 24th St.
BIRMINGHAM, AL 35203

Lawn & Garden Supply Co.
2222 N. 27th Ave.
PHOENIX, AZ 85017

H. V. Carter Company
1700 E. 14th St.
OAKLAND, CA 94606

Tarzana Mower & Engine Parts, Inc.
6075 Reseda Blvd.
RESEDA, CA 91335

Colorado Outdoor Equip., Inc.
527 W. Evans
DENVER, CO 80223

Roberts Supply, Inc.
2698 S. Orange Blossom Trail
ORLANDO, FL 32805

Lawn & Turf, Inc.
2570 Old Covington Hwy.
CONYERS, GA 30207

Small Engine Clinic, Inc.
98019 Kam Hwy.
HONOLULU, HAWAII 96701

Tyner Distributing, Inc.
5437 Kendall St.
BOISE, ID 83706

Plante's Lawn Equipment, Inc.
4 Grant St.
NORTH AURORA, IL 60542

Davis Turf Products, Inc.
435 S. Wheeling Rd.
WHEELING, IL 60090

T. E. Booher & Sons
1009 W. State St.
ALBANY, IN 47320

The Harnack Co.
728 Commercial St.
WATERLOO, IOWA 50701

Mid-East Power Equip. Co., Inc.
185 Lisle Rd.
LEXINGTON, KY 40586

Morton B. Collins
300 Birnie Ave.
SPRINGFIELD, MA 01106

Frost Company
483 Wildwood St.
WOBURN, MA 01801

Frederick Trading Co.
7901 Trading Lane-Box 400
FREDERICK, MD 21701

Adams Equipment, Inc.
8001 Newell St.
SILVER SPRINGS, MD 20910

Power Equipment Distributors, Inc.
340 N. Hubbard
MT CLEMENS, MI 48043

R. L. Gould Company
3711 N. Lexington Ave.
ST. PAUL, MN 55112

Hance Distributors
420 Excelsior Ave., W.
HOPKINS, MN 55343

Gunthers Service & Supply
7320 Wornall Rd.
KANSAS CITY, MO 64114

Henzler, Inc.
2015 Lemay Ferry Rd.
ST. LOUIS, MO 63125

Port Huron Machinery & Supply
801 Q St.
LINCOLN, NE 68508

George Smith & Sons, Inc.
322 Broadway
BETHPAGE, L.I., NY 11714

Grasslands Equip. & Irrigation
892 Troy Schenectady Rd.
LATHAM, NY 12110

Henry W. O'Neill & Associates, Inc.
410 N. Goodman St.
ROCHESTER, NY 14609

The Messinger Company, Inc.
374 Avery St.
ROCHESTER, NY 14606

Smith Hardware Co.
515 N. George St.
GOLDSBORO, NC 27530

Hayward Distributing Co.
460 Neifston St.
COLUMBUS, OH 43215

Schroeder Sales & Service, Inc.
1144 Harrison Ave.
HARRISON, OH 45030

PARKER SWEEPER COMPANY
P.O. Box 1728
SPRINGFIELD, OH 45501
Phone: 513-323-4901

Wait Sales Company
406-10 S. Peoria, Box 1015
TULSA, OK 74120

Baltz & Son Co.
9817 E. Burnside
PORTLAND, OR 97216

Monroe Machinery & Supplies, Inc.
1421 S. E. Gidson St.
PORTLAND, OR 97242

Lawn & Golf Supply Co.
647 Nutt Rd.
PHOENIXVILLE, PA 19460

Gardenville Supply Co., Inc.
Route 611
PIPERSVILLE, PA 18947

Bluement Co.
11125 Frankstown Rd.
PITTSBURGH, PA 15235

Niemeyer Corp.
1135 Phoenixville Pike, Box 1477
WEST CHESTER, PA 19360

Fidelity Sales Corp.
6331 Baum Dr.
KNOXVILLE, TN 37919

Fidelity Sales Corp.
447 E. Market St.
KINGSPORT, TN 37662

Fidelity Sales Corp.
6044 Lee Highway
CHATTANOOGA, TN 37421

Goldthwaite's of Dallas, Inc.
2700 Forest Ln., Box 34660
DALLAS, TX 75234

Goldthwaite's of Ft. Worth
1401 Foch St.
FT. WORTH, TX 76107

Goldthwaite's of Houston, Inc.
220 Farris
HOUSTON, TX 77025

Goldthwaite's of Texas, Inc.
10751 Sentinel
SAN ANTONIO, TX 78217

Boyd Martin Company
1260 N. W. Temple
SALT LAKE CITY, UT 84116

Wetsel Seed Co.
941 N. Liberty
HARRISONBURG, VA 22801

The Bentley Company
4126 Airport Way, S.
SEATTLE, WA 98108

Northwest Mower, Inc.
926 N. 165th St.
SEATTLE, WA 98133

Interstate Radiator &
Lawn Mower Co.
1611 4th Ave.
CHARLESTON, WV 25312

Reinders Brothers, Inc.
13400 Watertown Plank Rd.
ELM GROVE, WI 53122

R. L. Gould
344 Berger St.
GREEN BAY, WI 54302

Van's Supply & Equip. Co., Inc.
2640 S. Ashland Ave.
GREEN BAY, WI 54303

Powertek Equipment
9766 51 Avenue
EDMONTON, ALBERTA,
CANADA T6E 0A6

Shepherd Bros. Equip., Ltd.
19575 North 10 Highway
LANGLEY, B.C.,
CANADA V3A 4R8

Fallis Turf Equip., Ltd.
11951 Forge Place
RICHMOND, B.C.,
CANADA V7A 4V9

G. C. Duke Lawn Equipment
1184 Plains Rd., East
BURLINGTON, ONTARIO,
CANADA L7S 1W6